

A LETTER FROM THE TEAM RECTOR

The sign read: PUT CHRIST INTO CHRISTMAS THIS YEAR.

A young lady glanced at it momentarily, then turned to her friend and said,

“Hmm! Now the Church is trying to poke her nose into Christmas.”

On the surface the above may appear quite humorous. But scratch that surface and it actually indicates an attitude, which certainly exists and frequently appears to be pretty widespread.

With Advent and the approach of Christmas we are powerfully reminded that God’s agenda is no less than the whole of creation. Whereas it would be theologically unsound to make no distinction whatsoever between God Almighty and His Church, it is often true that we fail to live up to our calling by the limited scope of our agendas. All too frequently we “the church” set our sights, if anything, far too low!

Christmas raises our sights as it rightly focuses our thoughts and prayers upon the **INCARNATION**, “The Word Made Flesh.” The proclamation “We are the body of Christ,” which is always an affirmation of our participation in the **INCARNATION**, is powerful enough not only to blow away the proverbial cobwebs from the equally proverbial ceiling, but to take off the roof as well that we might gaze into the heavens and see the stars – perhaps even the star of Bethlehem – and become lost in wonder, love and praise.

Perhaps the best way to put Christ into Christmas is to put Christ into your heart.

May I take this opportunity to thank sincerely each and everyone of you for your support and prayers throughout the year and wish you a very blessed Christmas.

Stephen-Team Rector



UNITED REFORMED CHURCH WINSHAM

Minister – Revd John McMinn – 01935 872105

Hon Secretary – Michael Hebditch – 01460 30201

Sunday services at 10.30am. 1st Sunday, tea and biscuits after the service. 3rd Sunday Holy Communion
3rd Thursday 12.15-1.30 monthly Soup & Cheese Lunch at the Sports Club



THORNCOMBE CHAPEL

Normal Sunday Services: 11am and 6.30pm

Bible Study: **Wednesdays – 7.30pm** Ladies Bright Hour: **Alternate Wednesdays – 2.30pm**

Saturday Club for Boys & Girls: Two age groups 5-8 years & 11-15 years. 11am to 12 noon every Saturday



ROMAN CATHOLIC CHURCH CHARD

Priest: Canon James O’Brien – 01460 62197

Services: Sunday Mass 8am and 11am. Weekdays – 9.30am. Holy Days – 9am and 7pm.

Confessions – Saturdays 11am – 12 noon.



Prayer Requests and Visiting Co-ordinators:

Thorncombe: Marina Atyeo - (telephone: 01460 30594)

Winsham: Visiting Co-ordinator – Mrs Jean Peacock (telephone: 01460 30503)
Prayer Co-ordinator - Mrs Diana Kershaw (telephone: 01460 30273)



WELCOME FATHER COLIN AND GEORGINA

Fr. Colin's licensing by Bishop Peter is scheduled for Monday, 3rd February at 7 pm at The Church of the Good Shepherd. Please make a diary note straight away and plan to be there! We are hoping for a really good "Team turn-out" for this very special occasion.

We look forward to welcoming both him and Georgina to Chard in the New Year. In next month's issue we plan to have a "profile" of Fr Colin and Georgina. So, watch this space!



STIR UP SUNDAY – FAMILY SERVICE AT ST STEPHEN'S

We all enjoyed a very happy and thoughtful morning when our Mother's Union brought all the ingredients for making a scripture cake. The reason for all these items was explained by readings from the Bible by Diana and Jill.



A very keen and eager band of young helpers carried everything to Jennie, the cook. The young folk did extremely well and I am happy

to report that nothing was spilt! Perhaps this was due to the fact that they were all a year older. At the end of the service tempting smells were wafting down the aisle and we all enjoyed a gorgeous piece of hot cake and a cup of coffee. We were grateful to Sandie and Rod who brought their microwave and cooked the cake. Thank goodness for modern science!

How disappointing though that so few of the congregation support the young ones. Too many people say that Family Services are not for them, but the children are the church's future and without them the church will surely die. I beg people to think deeply about this and perhaps look at the service from a different angle.

There is a theme for each service and the hymns, readings and the talk are woven round that theme. It is a thoughtful and prayerful service. It would encourage the children so much if more people were to come. As young Jordan said, "we need more people to sing!"

SO COME ON – WHAT ABOUT IT? YOU COULD MAKE AN END OF YEAR RESOLUTION!

Pam Barrett – Churchwarden



CHANGE OF DATE

The deanery pilgrimage to Worcester Cathedral will now take place a week earlier i.e. SATURDAY, 10TH MAY, 2003.



RNLI

The Chard branch of the RNLI wish to thank all those people who so generously supported us at our Coffee Morning on 23rd October, 2002 at the Jubilee Hall.

We are pleased to say that the sum of £290 was raised towards RNLI funds.

We would also like to thank all those who so generously collected used postage stamps and foreign coins. These will also be used to raise funds to help the RNLI save lives at sea. Thank you.

Anne Elliott – Hon. Sec



COMPOST CORNER.



As I look out of the window I see many deciduous shrubs and trees still supporting green leaves, I would presume that by the time we get into December the majority of leaves will have fallen and so begins the correct time for pruning trees and summer flowering shrubs and of course any hedge laying, with the cut lying lower than the tip.

If you are keeping chrysanthemums, then the trick is to keep the frost at bay and ensure plenty of moving air to reduce mildew.

December is the time to order from the catalogues, as late ordering will often prove disappointing. When choosing plants via catalogues it is easy if you have pictures, but if not then you may have some difficulties or surprises when they turn up. Knowing your plant names is useful, common names are O.K. if we all use the same names, but hey guess what? We don't.

As it's approaching Christmas, well so the children keep reminding me, then I can remind you of a tip or

two if you intend to have a real Christmas tree. Rootless or other wise, it will require a drink or two, more often than is good for you! If it is rootless then cut an inch or two off the bottom after purchase.

If you are buying or receiving an amaryllis remember not to leave it in its box too long. Being a bulb it will start to grow given the warmth of your home. Though the stem shape may be interesting if constricted by the box the end result may be disappointing, some will “break out” seeking that all important light and water. I’m sure they would get up and walk to the sink as well if they could!

A job that can be done during December is a greenhouse and shed clean up. You can also wash and disinfect trays and pots.

All that expensive garden machinery would also benefit from a service and clean sharpened blades, and most engines benefit from a regular start up, it removes all the squatters from the exhaust pipe if nothing else. One thing many overlook is to clean up and even sharpen you’re spade and hoe.

Merry Christmas to you all and a big thank you to all who have supported Winsham Horticultural Society this past year.

Stephen Rowsell



THORNCOMBE RAIL ACTIVITIES CLUB

At the October meeting of the Club we welcomed Dave Kent from the Welsh Highland Narrow Gauge Railway.

He brought with him, all the way from North Wales, a large collection of slides from which he illustrated not only the history of the railway but also the progress being made in rebuilding the line from Carmarthen to Porth Madoc, right through the Snowdon National Park.

Some of the slides shown were shots taken in the early days of the railway and one of the original engines, “Russell”, is now back on the line having been used in various parts of the country including Purbeck in the intervening period.

Dave told us about the enormous problems that had to be overcome, mainly from farmers who had assumed that, as the railway had not been used for the sixty years since the track was lifted that it would never be used again and were using the old track bed as farm tracks; the drainage system which in a wet part of the country is so important had over the years become blocked, people who had bought houses near the old railway never expecting it to come back to

life, and also, to start with, from the National Park itself.

He explained to us how a lot of the new rolling stock has come from South Africa where narrow gauge lines are being closed and therefore track and other useful infrastructure items were readily available.

Quite a few of the members who were present are now planning a trip to North Wales to see this interesting line for themselves.

Members were reminded that the next meetings would be on Wednesday the 20th of November when David Milton will be showing slides and talking about “Somerset & Dorset, Bath to Bournemouth”.

Any enquiries please telephone Michael Sheasby on 01460 30474.



AMBITIOUS PLANS FOR THE SQUIRREL INN

The Squirrel Inn at Laymore has been undergoing a transformation at the hands of its new owners, Ian and Janet Tucker. Complete with a thatched roof to the bar, it has turned into a cosy, beamed pub /restaurant, with a really welcoming atmosphere.



Ian and Janet are not new to the trade, and have run two other pubs before coming to Thorncombe, one in Wiltshire, the other in Cornwall. Both of them have roots in Sherborne, so taking over the Squirrel is a sort of coming home.

They hope that the Squirrel will attract customers who will appreciate good, well-kept beers as well as those who are looking for high quality home prepared food at reasonable cost.

Jan and Ian provide a good bar food menu, and an ‘a la carte’ menu at reasonable cost, with emphasis on their fresh fish dishes. On Sundays, they are offering a freshly cooked roast lunch at £4.95 for the main course; it is advisable to book your table.

Set meals, with a choice of courses, will also be available on special occasions such as Christmas Day and New Years’ Eve. The three course Christmas lunch will be available at £22.50 per person, and

New Years' Eve Dinner, three courses and coffee will be available for £15.95 per head.

Looking ahead, the Squirrel will also soon be offering Bed & Breakfast. By the spring they should also be ready to accommodate parties and weddings. There are also plans to reopen the skittle alley in the New Year. Meanwhile a pool table and a darts board should help while away a pleasant hour or so. *JSS*



IN MEMORIAM

Winsham Parish Council has a responsibility placed upon it by the Health & Safety Executive to ensure that Memorials in the Cemetery are safe for visitors

**I.Harvie,
E.N. & C.E.Hollins
L. & M.A. Bishop
H.H.A. Stroud
J. Bagg & M. Scriven
E. & C. Warren**

**G. & M Bowden,
M.H. & M.B. Hunt
J.W. Harvey
G. & J. Spiller
S. & A. Spurdle**

**D.Woodroffe,
M.E.V. & J. Bray
G.F. Peterson
D.F. & W.E. Botting
A. Raisen**

**E.& J.B.Loveluck,
M.F. Young
S. North & E. Cox
E.C. & V.J. Pile
A. Peadon**



LUCY WHITE – MAGIC IN THE SUGAR ROOM

The third article in a series about local craftspeople.

It is hard to imagine a more ideal location than Oathill Farm for a craftsperson. Approached along a well-kept farm lane, it opens on to a farmhouse that

dates from 1703. A quiet, peaceful place.

Lucy has lived in the area most of her life, coming, in 1953, with her parents from Southampton. She married Tony, a local farmer. It was her wedding day

and passers by. It has an obligation to remove dangerous memorials, which include gravestones. Due to good management over the years, there are no memorials considered dangerous enough to warrant immediate removal. Some, however, are beginning to cause concern, and these are listed below.

The Parish Clerk (Frank Vaughan - Tel: 30310) would like to hear from anyone who has an interest in any of the memorial stones listed, to ensure that their views are known before the Parish Council takes any action that it considers necessary. Work on making memorials safe will begin in the spring, so let us have your views by the 31st March 2003

some forty years ago, and the sight of her beautiful wedding cake, crafted by Mr Bryant of Crewkerne, that led her to decide that cake icing and decoration was what she also wanted to do.

To start with she worked on cakes for local people and the 'big house' at Blackwood, where her mother and father were, respectively, cook and butler. Lucy had been brought up in an environment of cooking and food preparation, so was no new-comer to the icing bag and traditional ways of decorating food, and this, and her natural artistic instincts, got her off to a good start.

Always searching for new ways to improve her techniques, in 1979 she enrolled at Mary Ford's Icing School at Bournemouth, journeying between Clapton and Bournemouth, as time would allow, from being a mother and a dairy farmer's wife.

It is said that people make their own luck, and it often happens that the harder you work the luckier you become. Lucy's luck manifested itself in the people who became her tutors. Her first guru was Eddie Spence, a master of the craft, now Chairman of the British Sugar Craft Guild. She then came under the wing of Nicky Lodge, of worldwide reputation, who was developing new techniques in cake decoration made possible by development in sugar technology, and who now has Icing Schools around the world.

With her skills greatly strengthened, she entered upon the most challenging period of her career. Although

normally working alone, she started collaborating with her son Leslie, also highly skilled, on a full time basis. It was during this time that some of the most spectacular work was done. These included commissions for cakes decorated to represent Stately Homes, The Russian State Theatre in Moscow, and the Sydney Opera House.

Now Lucy likes to take life a little more quietly, and tends to concentrate her decorating skills on wedding cakes. Her mother, Phyllis Curwood, often makes the fruit cakes that provide the basis of her work, although Lucy does make cakes too, often those that have sponge bases and the profiteroles that go to make up 'French Wedding Cakes' – Cracombouche - those incredible spires of cream-filled, toffee covered mountains of calories that can stand as high as ten feet. The highest Lucy and her son have achieved is five!

The Parish Magazine is the only advertising Lucy does, and apart from this, all her work comes from recommendation. Although her spectacular pieces are a great source of professional satisfaction, what she really enjoys now is doing the wedding cakes for local brides. It reminds her of how she started!

Lucy and Oathill Farm can be found at the sign of the Teapot, just outside Clapton on the Thorncombe side. Forever energetic, she now operates in her spare time bed and breakfast and a delightful tearoom, which also serves light lunches, and roast lunches on Sundays, which need to be booked.



HOLDITCH HALL



The auction for Axminster and Chard hospitals was held on October 14th and raised a grand total of £708, which included the whist drive and draw. Each hospital will receive a total of £354.

The committee would like to thank everyone that supported the event in any way. Many thanks to our auctioneer Bert and those who supported him.

Our next event will be the Christmas Whist Drive on Monday, 16th December at 7.30pm.

Holditch Hall Committee



We welcomed three more children to playgroup after half term and they have settled really well into our routine. We have been enjoying the topic of food, so there has been a lot of cooking and shopping for food in our role-play area and, of course, they have enjoyed having the opportunity to make and cook their own snacks with real ingredients.

All of a sudden it is time to think about Christmas. We are busy organising an end of term party when the children will be treated to entertainment from Mr Beak, the magician. Afterwards there will be lots of good things to eat and to end Father Christmas is expected to arrive with a present for each child. We have been practising some Christmas songs which we will be singing for Father Christmas - I'm sure he will enjoy them.

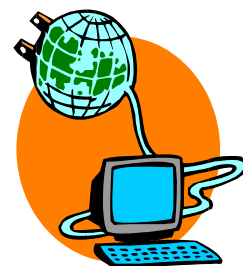
Rosemary and Brian Walley have kindly offered to host a coffee morning on Friday, 6th December at their home at 2, Chard Street from 10.30-12.00. Please come along and enjoy a cup of coffee and a mince pie with us and help us to raise much-needed funds for the young children in the village.

We have some places available at the moment; anyone who is interested and would like to come and see us enjoy our morning should ring Lindsay on 30389.



TRACE YOUR FAMILY HISTORY USING THE WEB MUSEUM

The Web Museum is now able to help people living in Winsham, or who have roots in the parish, trace their relatives through the parish registers of Baptisms, Marriages and Deaths, and village census returns.



Judy Hodges, an experienced genealogist (and who has family links with the village dating back some generations ago) has copies of village records starting around 1500, and copies of the village census returns of 1851 and 1881. She has very kindly offered to carry out searches, free of

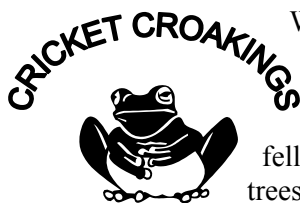
charge, for Winsham people interested in researching their family history.

All you have to do is visit the Winsham Web Museum site: www.winshamwebmuseum.co.uk and go to the Archive Gallery. You will then see an e-mail link to reach Judy.

Also in the Archive Gallery you can access back numbers of the Parish Magazine. This facility only goes back to the beginning of this year; a couple of months are missing due to initial technical problems. These are now sorted and we look forward to establishing an ongoing and complete record of back numbers for reference purposes.

I regret to tell you that Christina Ballinger, our secretary, has had to resign from our management committee. A change of job now means that she is working in Exeter, and no longer living at Magdalen Farm. Her very considerable experience of the museum world will be greatly missed. We are however very grateful to Janet Smart who has volunteered to take on this post.

The Winsham Web Museum will be holding its first AGM on Friday, 29th November, at 8.00pm in the Committee Room at the Jubilee Hall. All are welcome. JSS



With the Indian summer well and truly over November was brimming over with storms and gales that felled yet more of our ancient trees, leaving me to wonder if, by the time my children are grown up (will that day ever come?) there will be any archaic, native trees left. With dense fog hanging over the valley most evenings it was an awesome, if surreal sight to listen to the maize being finally harvested and watch faint silhouettes appear out of the mist with heavy loads of cargo and thick mud awash everywhere.

Within the wild life park Debbie, the new tapir is settling into her new enclosure. Sadly she is slightly lonesome due to the fact that her 'intended' died shortly before they could meet and so a new playmate is being sought. If you feel that someone in your home is outgrowing their space, then the wild life park may have the answer. A new iguana centre has just opened opposite the tropical aviary full of donated specimens that have grown too large for their existing homes!

The leisure club is due to reopen fully on November 22nd with a new sauna and revamped pool area. The cause of September's dreadful fire is still being investigated, but hopefully the new sauna will behave itself and allow members to resume their frightfully important "fitness regime!"

The Cricket St Thomas carol concert is on Sunday, 22nd December and hopefully everyone on our flower rota will be around on Friday, 20th December to deck the church with ivy.

Lastly, there has been a strange case of road rage within Cricket St Thomas!! A mysterious gentleman has been spotted loosing his cool when hotel guests refused to move out of his way. Apparently he was late for a very important appointment?! SV



A NOTE OF APPRECIATION TO THE PARISH MAG.

Sadly we were burgled last night (workshop only) and on going out to investigate found the thieves had deserted before I had even woken up properly!

Not wanting to waste emergency service time by phoning 999 we remembered the parish magazine has a quick reference page and went to that. It was so clear and easy to find the 24hr manned help desk number in bold type. They answered and sent police out within an hour.

Just wanted to say that page was a "godsend" and thank you and encourage you to keep it up to date.

Simon and Judy Preston

Thank you for those kind words, they help us all to keep going! Hope not too much has gone missing from your workshop. Ed.



WINSHAM PARISH GUIDE 2003

All householders in the parish will be receiving, towards the end of December, their **free** copy of the Parish Guide, together with a letter from Colin Slade, Chairman of Winsham Parish Council, giving an account of the main areas of Parish Council activity during the past year.



If you have not received your copy by the end of December, please let the Parish Clerk know. (Frank Vaughan-30310.)

The Guide will look rather different from the earlier editions and will carry a great deal of updated information, so keep it in a safe but handy place. You never know when it will be useful.

Copies will be on sale in The Bell and the Winsham Village Shop for the benefit of visitors.



HOLIDAY ON ICE

I have booked some tickets for the new "Holiday On Ice" show at Westpoint, Exeter on Friday, 21st February, 2003 at 7.30pm. Adults £18, children under 16 £11. If you are interested let me know as soon as possible. Transport not included. Meg Terrett – 01460 30464.



WINSHAM PARISH COUNCIL

The Parish Clerk Writes: -

What is a "Rural Transport Interchange"? In August the Parish Council received a letter from 'ATKINS Highways and Transportation' to say they had been commissioned by Somerset County Council to consider the implementation of a "Rural Transport Interchange" and would like the Parish Council's comments. The drawings attached to the letter from ATKINS were clearly a scheme plan for a proposed bus shelter, the location being towards the top end of the lower recreation ground. The Parish Council has for some time been working towards building its own shelter very near the same location. You may remember I wrote about the proposed 'Jubilee Shelter' in this magazine about a year ago.

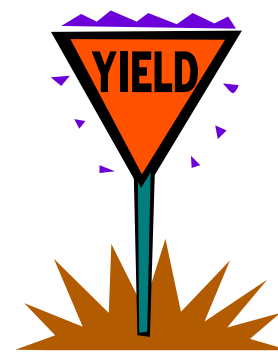
A site meeting was quickly arranged for 1st October, the outcome of which looks promising. County Council Officers at the meeting were sympathetic to the Parish Councils' scheme and there was certainly a mood of co-operation prevailing. The County proposes to build a bus pull in, installing low floor bus kerbs. In principle there was an offer made to assign the money they would have spent on their bus shelter towards the Parish Council's multi-purpose shelter.

The Parish Council's proposals are, and always have been, for a multi-purpose shelter of substantial construction, and their preferred site for the shelter on a piece of land at the junction of Davies Close and the B3162. This land is owned by South Somerset Homes. At the time of writing this article the Parish Council is in negotiations with South Somerset Homes to take a lease on this piece of land.

Negotiations are not finalised. However, in view of the offer made by the County, our Chairman Mr Colin Slade has drawn up plans for the shelter, submitting them to the District Council for planning permission, to South Somerset Homes for approval and to ATKINS for information and confirmation of the Parish Council's proposals.

The access/egress to and from the lower recreation ground near the War Memorial steps is directly onto the B3162 and very dangerous. A planning application has also been submitted by the Parish Council to move the access away from the road and directly onto the War Memorial steps. There will be a requirement to realign the war Memorial steps to make the new access safe.

Progress on achieving the 20-mph speed restriction past the school does not look as promising. County Councillor David Gordon attended the Parish Council meeting on Wednesday only to inform members that Winsham was number 203 on a list of 300 awaiting the role out of the scheme. At present 50 schemes a year are being processed, so it will be 4 years before the work is done in Winsham. Councillor Mr Keith Marsh has been in discussion with the school, trying for partnership funding, using monies from the 'Safe Routes to Schools' budget and Parish Council money to try and bring the time scale forward. After a meeting at the school with Andy Coombes, County Hall's 'Safe Routes to Schools Officer,' the scheme is still 3 years away.



Flooding, what can be done? A review of the situation above Fore Street is urgently needed. There was a lengthy discussion at the Parish Council meeting, ranging from climate change, the need for deeper gullies and changes in farming practice. It was agreed that the County Council Highway Service Manager (Tony Shire) should be asked to arrange a meeting with all parties concerned.

The next meeting of the Parish Council will be on **Wednesday 4th December at 8 p.m.** in the Jubilee Hall. If you can please come along.



PASS THE BUCK-When you see the beginning of anxiety....at that precise moment pass it on to the Lord.

THORNCOMBE VILLAGE TRUST



Unfortunately because of extreme weather, it was decided to abandon the annual walk. We thank Eve and John Higgs for the hours of preparation. Well done those who noticed the mistakes on the maps showing the proposed route!

At last the “Comley” bench has been delivered. Nigel and Richard are preparing the site and it is hoped Hazel and her family will be able to visit the village sometime in December to formally recognise the oak bench in memory of Derek. We think this bench will help walkers to rest a while and enjoy a view of our lovely countryside.

Our meeting in January will be a talk on the Jurassic Coastline and look forward to an interesting and enjoyable evening. Members and non-members are welcome.

We take this opportunity to wish all our members a Happy Christmas and a Peaceful New Year.

Did you see.....?

On November 6th parties of assorted thrushes, redwings, fieldfares, blackbirds and one or two mistle-thrushes suddenly arrived and enthusiastically began to devour all the holly berries, haws and hips that they could find. This at least was very much on schedule in a year of unusual weather variations, which have profoundly affected both wild life and many crops. The wet and sunless early summer led to a wonderfully calm and dry September, with near drought conditions. Wasps and moths were unusually scarce as were butterflies until late summer, when migrants from the continent such as painted ladies and clouded yellows joined homegrown red admirals, tortoiseshells and commas.

Of migrant birds, there were good pre-migratory gathering of swallows and martins, alarmed more often than for some years by swooping hobbies. Other southbound birds were neither numerous nor varied and a few chiff-chaffs and blackcaps are still lingering (and may be with us through the winter.) This year for the first time, the writer neither saw nor heard a single cuckoo in the parish, a sad reflection of the general decline of many bird species.



It's that time of year again when the Bell's lottery donations are shared out. Over £700 was raised by our generous customers for various village causes. £40 was also raised for the Air Ambulance by guessing the weight of

the large pink banana squash. It weighed in at 31½ lbs. Thank you to everyone who participated in the fund raising, we couldn't do it without you.

Christmas and New Year is fast approaching. Sunday lunches will be available up to 22nd December, buffets and Christmas dinners for large parties also catered for.

We are open on Christmas Day 12noon – 2pm. The Christmas quiz is on Boxing Day – everyone welcome to come and join in the fun.

New Year's Eve – Live entertainment and buffet £5 per person. Tickets will be limited and will be available from 30th November. We look forward to seeing all the old faces (and new) over the festive season.

Fund raising skittles in aid of Air Ambulance in December to win a large fresh turkey – look out for the date.

Finally, keep up the good work in the village shop, what a good feedback from all our customers.



PARISH CLERK/FINANCE OFFICER- THORNCOMBE PARISH COUNCIL

The post is part-time averaging approximately 30 hours per month and the successful applicant is expected to attend at least one evening meeting each month.

The person appointed would be expected to take minutes, write letters, prepare agendas and keep financial records for the Parish Council, must be computer literate and have an aptitude for figures. Further details can be obtained together with an application form from the present clerk.

Mrs M Marsh (01460-30139) Closing date for receipt of applications **16th December, 2002.**



WINSHAM VILLAGE SHOP

After 2 months' trading under the new owners, Winsham Village Shop is thriving. We made cautious predictions about anticipated sales figures, expecting an initial drop but in fact we have exceeded our targets, thanks of course to the level of support we are receiving from our customers. Keep on coming in – and spending! We have introduced several new lines including local apples, and Somerset apple juice, very competitively priced. We are also able to sell locally produced cheese at lower prices than the supermarkets.

We have been able to extend our opening hours further and are now open from Monday to Friday from 7.30am to 5.30pm. We hope to be able to open in the early evenings soon. None of this would be possible without help from our volunteers. We currently have about 25 people who help in one way or another but we still need more. There are four main areas in which volunteers can help: cleaning, paper sorting (early mornings), shelf stacking and behind the counter. The more help we get the less the demands on each individual's time. Cleaners are currently asked for about an hour every 2 months. Paper sorting takes less than an hour a day – at present people are doing this about once a week. Shelf stacking is also an hour or so at a time and can be done at volunteers' convenience. Behind the counter work is perhaps the most difficult but we provide training. Volunteers are needed to supplement our paid staff one weekend a month, Wednesday afternoons and in the future for about an hour and a half in the early evenings as well as being available to cover for illness etc. At present we have 5 definite volunteer shop assistants but need more. I would like to be able not to call on people for more than about 2 hours every other week and therefore need another 6 or 7 helpers. It's actually quite fun to do, if you like talking to people, and although some people are intimidated by the complexities it is, in fact, fairly straightforward (most of the time). Don't worry if you can't add up – the till does it for you. It's a very good way of keeping up with village news! Please do not hesitate to get in touch if you feel you can help. Speak to anyone in the shop, or call me direct (30306).

On December 10th in the Jubilee Hall we are hosting a local food fair. Some of our new providers will be offering tastings of their products all of which are on sale in the shop.

The building works are progressing. We now have a staff toilet and an area to boil a kettle for tea or coffee and by the time this is published should have been

rewired. We are hoping to change the front windows to provide better insulation and security as well as an improved appearance.

Robert Shearer



THORNCOMBE VILLAGE HALL

INSTANT WIT – quality comedy impro show!

In the manner of Whose Line is it Anyway? Instant Wit produce an engaging comedy impro show tailor-made for all audiences. The show provides a fast moving and up-tempo evening packed full of sketches, gags, songs and surreal situations. With three or four actors and a musician, the whole evening is improvised around audience suggestions, so, without ever



embarrassing members of the audience, each show is unique. Tried and tested in recent months on rural circuits in Somerset, Wiltshire, Hereford and Shropshire, and hugely promising last December at each of the three Artsreach performances given, Bristol based Instant Wit will provide ninety minutes (plus interval) of spontaneous live fun!



NEWS FROM DAVIES CLOSE

Thank you to the hard working Street Fair Committee for their donation to us of £50. We all enjoyed Christmas in June and look forward to supporting the next Street Fair.

Another thank you goes to Terri and Tony at the Bell for running the weekly lottery and thank you to the regulars who nominate us, we received £112.

Transport. Can anyone help us please? All national health transport has stopped going into Chard so getting to the doctor, dentist, optician and Chard hospital for appointments can cost up to £8 by taxi. It is not often transport is needed for these purposes but when it does it would be nice to be able to call for help. Maybe you could fit your shopping trip to coincide with the tenant's appointment. We would willingly pay for the petrol. I really would be grateful if anyone could help us out with this problem. Please give me a ring on 01460 30694.

Many thanks.

Maureen

THORNCOMBE W.I.

There will be no meeting in December but the institute will meet for the annual Christmas dinner at the Tytherleigh Arms on December 10th.

In January we will hold our usual post-Christmas skittles evening, which has proved very popular. We gather at the Sports Club on Tuesday January 14th at 7.30pm.

We wish you all a very happy Christmas. *MT*



WINSHAM SCHOOL



This year Winsham School is attempting to become more aware of environmental issues. Each month we will concentrate on a theme and will work to raise awareness of a particular issue. These will vary from feeding birds in winter to saving energy by turning off lights.

October's theme was recycling. A visit from a member of the Carymoor Environmental Trust started us thinking about waste and how we can reduce the amount of rubbish that goes into landfill sites.

The junior class designed posters around the theme of the three "Rs" – REDUCE REUSE RECYCLE. The infants have already begun by recycling as much paper as possible and there is a plan to site a compost bin on the garden for all the apple cores and orange peel from school lunches.

The school has taken heed of recent research that shows children do not drink enough and that this can have an adverse effect on their learning. All children are provided with a drink at morning break, either milk or water. A water cooler has been installed for cool water drinks at lunchtime, and a fountain in the playground is available at all other times.



THORNCOMBE ART GROUP

Thorncombe art group held its second exhibition on Saturday, 19th October. Eleven members showed 121 pictures between them. They were all extremely varied and of a very high standard.



Oliver Letwin kindly opened the exhibition and was so impressed he bought two pictures. Coffee,

lunches and cream teas were served throughout the day and the proceeds from this, the raffle, sale of cards and donations came to well over £360 which will be sent to the Macmillan Nurses, St Margaret's Hospice and to Breast Cancer.

The group's 2003 calendar was also on sale. This will be available from the Thorncombe Stores price £3 of which £1 will be donated to the Thorncombe First Responders. The calendar features paintings from around Thorncombe and there is a free print on the reverse for when you tire of 2003.

The group has purchased the equipment to construct display boards and this will be available to hire should other groups have need of them.

We thank you all for your support and hope that those of you who bought our pictures will get endless enjoyment from them. *MT*



ST HELENA APPEAL

In October we discovered the shipping company was intending to move R.M.S. St Helena to Portland docks.



Wonderful! We immediately contacted the company, Andrew Weir Shipping, to see if we could send some free freight. A very helpful documentation manager, Derek Kaye, sent us the necessary paperwork the same day as I phoned. How's that for service!

We had six boxes of clothes etc. at this point so a frantic fortnight of collecting, begging and packing and labelling ensued. On October 24th we drove down to Portland with nineteen large cardboard cartons of toys, books, videos, saucepans, shoes, children's clothes, adult's clothes all in super condition and some brand new. Thanks a million; we could not do this without you.

Bobby Robertson of the St Helena Community Help Association has been very ill this year but is now improving. We have set up an e-mail connection with Bobby and hopefully it won't take four months in future to exchange news. Please keep this appeal in mind when you are doing any clearing out.

The R.M.S. St Helena will sail again in February so do your spring-cleaning early!

A very merry Christmas from Jilly and George (Hobbs.) 01460-30621.



WINSHAM WALKERS

Once again, the Winsham Walkers had a bright sunny morning for their November walk after several days of rain. Thirteen walkers and seven dogs set off from the Bell Inn and walked through Bere Farm alongside the river. At Shedrick Bridge we followed the track and crossed the river by the new bridge, which has replaced the one that was washed away when the river banks collapsed. Following the footpath along the river we crossed back onto the other side and went across the fields to reach the road to Crewkerne at the Squirrel Inn. Looking back, the views across the fields were superb. We then walked along the road towards Crewkerne for a short distance before following the track and footpath across the fields to Magdalen Farm. The permissive path around Magdalen Farm was taken to arrive back at The Bell for timely refreshment and lunch.

Our next walk is on the 5th December starting from The Bell at 11.00 a.m when we will be doing a "lane walk" as the fields are very wet underfoot at the present time. Why not join us. Further information from Peter Pye, 01460 30751.



Three planning applications were discussed at the November meeting. The Parish Council approved the following two and it is now up to the West Dorset Planning Committee to make their decision.

1/W/2002/1720 Full Del – Chard Street (Opposite Thorncombe School), Thorncombe. To construct Agricultural Access.

1/W/2002/1729 Listed Bldg Consent Del – Lynden Lea, Holditch, Thorncombe. To replace guttering.

A third application was received on the day of the meeting and was heard, but no decision could be reached until it had been advertised and time given for parishioners to make their comments.

Please be on the lookout for a red car Registration Number K682 PAF The driver is a stockily built man, approximately 45, almost bald with a moustache. He is wanted to help with enquiries in connection with a number of burglaries in the Devon, Somerset, Dorset area. If you see this man or the car please ring 999 immediately.

We have a young lady in Thorncombe doing a school project on the growth and development of the village over the last century. If you or someone you know has maps, photographs, or perhaps some other information, please let me know.

The results of the traffic survey done on 8th October 2002 showed a 36% increase in the number of vehicles, motorcycles and cyclists using Broadbridge Lane, justifying the Parish Council's concern over safety issues. Graphs provided by Rory Casey and

THORNCOMBE PARISH COUNCIL

The Parish Clerk writes: -

It is difficult to believe that another year is ending, and we are now looking forward to 2003! On behalf of the Parish Council and myself, we wish you a Peaceful, Joyful Christmas and a very Happy, Healthy 2003. Please don't forget to join in the lighting up of the Christmas tree. A great time was had by all last year with carol singing, mulled wine and mince pies. There will also be a fruit punch served this year.

Now back to business.

The clerk's position is being re-advertised on page 9 of this magazine.

The proposed precept for 2003-2004 has been agreed by the parish council and will now be forwarded to the County Council for approval. Many requests for grants and donations were received, and the Council voted to allocate funds to the majority of these. The details are enclosed in the minutes of the November meeting and are posted on the Notice Boards.

other supporting documents have been forwarded to the Dorset Planning Office, Dorset County Councillor Col. Brierley and to Oliver Letwin M.P.

The Audit Date for the 2001-02 accounts has been extended until 15th December. If you would like to examine them, please contact on 01460-30139 or by email at MmarshTPC@aol.com to make arrangements.

If you have an idea you feel might benefit the village, or comments to make, please come to the Parish Council meeting and tell us. The next meeting is 3rd December at 7:30 in the Community Room of the Village Hall. Everyone is welcome. If you would like an item placed on the Agenda, please contact Mark Agnew 01460-30385.



RELAX

God is 'the God of all comforts, who comforts us in all our tribulations.'

2 Corinthians 1:3-4

May we remind all our readers that your subscription to the magazine will be due on delivery in January. The price has remained the same for 2003, £4.20 for the year.



we wish all our readers
a very happy Christmas
and a
peaceful and happy
new year



