

The Vicarage
Thorncombe

Dear Friends,

We are now a month on into the calendar year. How well are you holding to those New Year Promises? At the time they were made I'm sure you had every intention of keeping them and perhaps still do. So often though, we need the help of those around us – and God's guiding light in prayer – to meet whatever challenges we've set ourselves.

Today's world is so different from that of our Lord's although they had similar problems of living together and being at peace with one another. As I write these few words I remind myself that our world is a troubled one that longs for peace, a world terrorised by war and fear.

Solomon, when he succeeded his father David as king of Israel, was asked by God in a dream what gift he most desired. Solomon answered, "give thy servant an understanding heart." In the Book of Proverbs for instance, we are reminded that the price of wisdom is above rubies and that it is better to get wisdom than gold. It is this gift of wisdom that we desire for our leaders and ourselves in these difficult times as we pray together for global peace and stability.

Each month the Healing and Wholeness Service alternates between St Mary's Thorncombe and St Stephen's Winsham. The next service will be at St Mary's Thorncombe on Wednesday 19th February at 2.30pm. It is a prayerful service concerned to help us achieve inner peace in body, mind and spirit – healing not only for the individual but also for the nations of the world. We meet in belief, faith and hope. For "faith is the assurance of things hoped for, the conviction of things not seen," Hebrews 11.1. Since Jesus said; "Blessed are those who have not seen and yet believe". The service lasts approximately 30-40 minutes. Do join us.

This month Monday 3rd February at 7.00pm we welcome Colin Furness as Team Vicar at his Institution and Licensing at The Church of the Good Shepherd Furnham, Chard by Bishop Peter. We look forward to Colin's ministry among us and to meeting and welcoming him and his wife, Georgina.

May God's Blessing be with you all.

Ernie Chivers



LENT LUNCHESES

It is hoped to arrange Lent Lunches in aid of various charities again this year. If you would be interested in housing a lunch, please contact the vicarage regarding date and time to suit you. Telephone 01460 30479. Many thanks Margaret and Ernie Chivers.



FROM THE PARISH REGISTERS

WEDDING	December 28 th	Benjamin Knight & Lucinda Roper	St Mary's Thorncombe
FUNERAL	December 30 th	Edith Winifred Jones, Winsham	Cremation at Taunton



UNITED REFORMED CHURCH WINSHAM

Minister – Revd John McMinn – 01935 872105

Hon Secretary – Michael Hebditch – 01460 30201

Sunday services at 10.30am. 1st Sunday, tea and biscuits after the service. 3rd Sunday Holy Communion
3rd Thursday 12.15-1.30 monthly Soup & Cheese Lunch at the Sports Club



THORNCOMBE CHAPEL

Normal Sunday Services: 11am and 6.30pm

Bible Study: **Wednesdays – 7.30pm** Ladies Bright Hour: **Alternate Wednesdays – 2.30pm**

Saturday Club for Boys & Girls: Two age groups 5-8 years & 11-15 years. 11am to 12 noon every Saturday



ROMAN CATHOLIC CHURCH CHARD

Priest: Canon James O'Brien – 01460 62197

Services: Sunday Mass 8am and 11am. Weekdays – 9.30am. Holy Days – 9am and 7pm.

Confessions – Saturdays 11am – 12 noon.



WINSHAM WILDLIFE 2002

For those of us who recall very many decades of Winsham, this past year – the mildest on record- has seen the wild life adjusting to the year round equitable temperatures. It is almost solely the day-length that now adjusts the seasonal habits. A trip around the lanes just after Christmas Day revealed only two flowering wild plant species.. hogweed and celandine. There are probably dandelions, daisies

and the odd primrose but avoiding the stones and potholes I didn't see them at bicycle speed. My record is 35 species on Boxing Day 1975.

Winsham has had its highlights. What about the huge (600) flock of lapwings and the mixed flock of buzzards and red kites (someone counted 18 kites

from a coach) last spring. There was a pair of little egrets in the next field. The largest noted flock of fieldfares and redwings took a minute to fly over Windwhistle at this Christmas. A 'winter' flock of some 100 mixed finches at the lower end of the village can be lured to gardens. Mostly chaffinches, greenfinches, bramblings, siskins with a sprinkling of house sparrows, hedge sparrows, a single yellow hammer and more great, coal, marsh and blue tits - all these to the obvious annoyance of the resident robins, collard doves and a pair of pheasants.

Other avian delights have been the party of 10 longed tailed tits and 6 gold crests that seem to circle the village. Other items recorded have been a water rail (near the river,) a tree creeper on beech and ash trees and a gold finch and a chaffinch feeding on nut baskets. Tawny owls have been joining the foxes in a midnight duet this December.

A few interesting toadstools (including shaggy ink cap) have appeared. Very few butterflies (mostly brimstone, orange tip, peacock and red admiral) have been seen this year. Just a few dragonflies and wasps, but a family of bumblebees (3small and 1 large) have been feeding on the mahonia every day since Christmas. In the autumn a large 6 inch newt (it could have been a 'great crested') was caught and released in a Winsham garden pond.

Winsham is teeming with wildlife...bee eaters may reach us in 2003. PS



THORNCOMBE RAIL ACTIVITIES CLUB

At the December meeting of the club we welcomed Peter Moreland, one of our members, who gave us an interesting illustrated talk on how the railways dealt with the "special traffic" that his work involved. Peter explained some of the arrangements that had to be made to accommodate this side of the business and what happened on the few occasions when things did not work out according to plan. Viewed after the date they were amusing but at the time, for those involved, were far from funny.

The second part of the meeting was a showing of some of the railway heritage films covering the forties, fifties and sixties, illustrating how the railways were being operated forty years or so ago. One of the films showed how work was progressing with original electrification of the west coast main line back in the sixties, another on how to operate single line working safely, and another illustrating the development of the Blue Pullman between London and Bristol, Birmingham and Manchester.

Members were reminded that the February meeting would be on Wednesday the 19th of February when David Longman will be giving an illustrated talk "An A-Z of World Steam".

Any inquiries please telephone Michael Sheasby on 01460 30474.



ST HELENA COMMUNITY HELP ASSOCIATION



To the people of Winsham and surrounding district.

Every so often in life when depression, doubts and fears set in, questions are asked about existence and things beyond existence and then comes the big question; Why are we here? What function do we serve? What are the things we should cherish? I come up again and again with the same answer; our purpose is to be human and to cherish things human.

The primary difference between animals and humans is that animals are driven by the need to survive either in themselves or through their offspring. I suppose humans are similar in that they look for immortality in their children. We hope to pass on to our children the beliefs, ideals and principles by

which all should live. Different nations, different peoples, different religions all seem to have personal aims, directives and yearnings, but through all of them is an under current of idealism that binds them all to a concept which we know in the west as Christianity, in the Middle East as Islam and the far east Buddhism. There are many others. The belief is that we have a responsibility to each other, a responsibility born out of our own beliefs, that we all share something wonderful; the essence of life. This belief is not social, economic or lawful driven. It is born within the hearts of people. Everyone yearns for it, hopes for it, longs for it. If it could be purchased or traded for, it would probably be in abundance worldwide, but alas it can only be got by giving, by living as we would expect others to live. We are all aware of the kind of life, the kind of living we want but so few of us do so little towards the realisation of our hopes.

Now and again we are surprised by individuals, by groups who achieve that to which we aspire, who live, as we would wish all to live. Sometimes we find what we are seeking next door to us and sometimes we find it in distant places. I found it in a village in Somerset near Chard, called Winsham.

A term that seems to have dropped from our language because of so much past abuse in the use of it that it became almost meaningless, is, in my mind revived in all its glory when I think of such people as those of you in Winsham and district. That term is 'good.'

Winsham, many people have cause to be grateful to you. I speak for them, of them and with them when I say, from the heart; you are good people. In my mind it is an accolade I cannot surpass. You are worthy of more, much more, but we have so little to give and what little we have is given to you without reservation. In the coming weeks you will be in our thoughts and where prayers are needed, prayers will be given.

It has been truly said that if one lights just one candle the world becomes a much brighter place in which to live. Winsham has lit many candles for the people here. We still have shadows of doubts here, but the brightness generated by all of you outshines any fears we might have about being alone in this world to face our future.

Winsham - thank you one and all. May your Christmas be happy.
Bobby Robertson
St. Helena Island.

(This was received too late to be included in the December issue. Ed.)

“THE CORNISH WAY” - 130-Mile Cycle Ride – Challenge 2003

How would you like to test out your fitness and at the same time raise money for a worthwhile charity? Well, now’s your ideal opportunity.

I am intending to undertake another “Sponsored Cycle Ride” from the 27th – 29th March 2003 inclusive, which will be “The Cornish Way”. I am, therefore, looking for suitable volunteers who would like to join the expedition and raise money for an appropriate charitable cause.

So, just what is it?

The Cornish Way is a 130 mile cycle ride from Lands End to Bude and forms part of the National Cycle Network (Route 3/32) operated and maintained via “Sustrans” the sustainable transport organisation based in Bristol and Local Authorities.

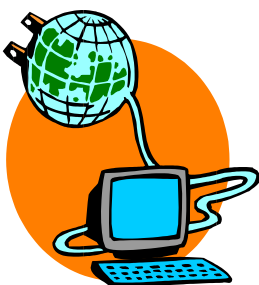
It begins at the world-renowned Land’s End and travels through the ancient landscape of Penwith and the magnificent Mount’s Bay. Passing via St Michaels Mount, Hayle and Truro. The southern route crosses the River Fal, via the King Harry ferry into the lush river valleys and coastline between Truro and St Austell before arriving at Bodmin. It then over the moors via Camelford, Hallworthy and Wainhouse Corner before meeting the north western coastline on the final stage which finishes at Bude, a total of approx 130 miles.

OK then its over to you!!

If you feel that you could meet the challenge and also raise money for a worthwhile charity give me a ring and I will be delighted to discuss the project in more detail.
Derek Bond - 01460-30047



TEMPORARY BOTTLENECK AT WINSHAM WEB MUSEUM



Those of you who visit the museum on a regular basis will have noticed that not much has changed or been added in the last few months. This is due to our web master, Bob Osborn, being extremely busy. He is the person who takes the

material that is supplied to him by various members of the museum committee, and other members of the parish, and actually puts it on the ‘net’. To help with this problem, Roy Smart will soon be assisting him, and we are looking for others who are prepared to

learn and dabble in the arcane practices that have resulted in our venture being so successful.

A great deal of material is waiting in the queue. It includes a gallery prepared by Paul Smith dealing with farming in the parish over the last hundred years or so, reminding us of the ever-changing face of British farming. The Winsham chapter from the ‘Book of the Axe’ is also nearly ready to be viewed, complete with its wonderful engravings dating back to the 1850’s. Peter Duffel’s work on the ‘Winsham at War’ gallery is also progressing with new information waiting to be presented.

The History of Winsham section is also being enlarged. Stella Abbey’s review of what village life was probably like during Roman and Saxons times has now been extended by her to include the mediaeval times (Cadfael and all that!) A splendid account of the likely history and architecture of Charlton Cottage, written by a previous owner, is also ready for display. It gives a perspective on life in the village from Elizabethan times onwards. The cottage has the remnants of a window designed to allow the owner to fire a blunderbuss from it, as a protection for its inhabitants. With gun crime rising as it is, perhaps builders will soon be incorporating a similar facility on new housing developments!

Many other interesting facets of the history of Winsham are in the course of preparation. A great deal of information is being gathered on the history of Leigh House, and we hope to be able to cover the more recent years of Cricket St.Thomas.

We are short of helpers however, so if you are interested in the history of Winsham, or the computer side of our endeavours, just let us know. *JSS*



THORNCOMBE NEW YEAR’S EVE 2002 BARN DANCE

A big thank you to all the New Year revellers who supported this event and made the evening such fun and to the bell ringers for helping us round off the evening so appropriately!

Special mention in dispatches to Rose, Mike, Kath, Sally, Tina, Philip, Olive, Steve, Sue, Andrew, Meg, Pete, Amanda, Brian and June for helping set up and clearing up the village hall. The bring and



share supper provided a tempting array of delicious food, a special commendation to Mirella for her cauldron of delicious pig's trotter and green lentil stew, a traditional Italian dish served on New Year's Eve in her village. An adventurous first for many of us!

We had one of the best bands in the West Country "Jigs for Gigs" and our caller Dave soon had everyone dancing, with his infectious energy and enthusiasm.

It was altogether a great evening with an opportunity to meet friends and neighbours; as one departing guest commented, "I cannot think of a better way to spend New Year's Eve."

Following disbursements a donation of £36.66 has been made to Thorncombe First Responders.

Eve and John Higgs & OM



WINSHAM PARISH COUNCIL

The Parish Clerk writes: -

The Parish Council is beginning to make progress with the provision of 'affordable housing'. Other organisations are also realising there is an unmet need. The Community Council for Somerset has recently employed two 'rural housing enablers', Jonathan Layzell & Jo Cox. South Somerset District Council has now appointed a 'Rural housing development officer', Mark Dillon. The District Council has also signed up a 'threshold partner', Hastoe/Wyvern. Hastoe/Wyvern have the job, of working with the local authority to collect the data to establish the core need, co-ordinating the selection of a suitable site, designing the housing provision and eventually becoming the 'social landlord'. Affordable Housing is certainly benefiting from a higher profile at local and national government level.

The Parish Council has already carried out an independent housing needs survey in May 2002. The success of this survey places Winsham in a good position to move forward and achieve 'affordable housing'. Mark Dillon & Anne Harries (Hastoe/Wyvern) were invited to our meeting on Wednesday, to present the way forward for Winsham.

Two activities need to progress in parallel. The survey carried out by the rural housing trust produced raw data, this data needs honing in and updating, there will be a follow up questionnaire distributed throughout all households in the parish.



Finding suitable land at well below normal housing site value is key to the success of a scheme. In all probability this will be outside normal development limits meaning that a legal agreement will have to be reached giving priority occupation to people with a connection to the parish. Hastoe/Wyvern will have the overall responsibility of acquiring a site. To achieve this they will co-ordinate a 'task force' which it is hoped will comprise a Hastoe/Wyvern housing association representative, the rural housing development officer, a planning officer, a county highway officer, a housing designer, the ward member and representatives from the parish council. Finance for the project comes from three direct and one indirect source. Grants from the Housing Corporation and South Somerset District Council, private loans funded from rental income streams and the housing associations own funds provide the direct sources. Acquiring land at a reasonable price is the indirect source and vital to enable the project.

When all the elements come together time scales hang on the allocation of grants by the housing corporation. Bids have to be in place by October for their annual grant allocations. Preferably bids will include successful planning applications. So, for a theoretical bid in October 2003, a site must first be found and planning permission granted. Only then can the contracts be placed and actual building work start. The most optimistic completion would be August 2004 but realistically it could be mid 2005 before houses can be occupied.

What about the cost of renting a property? This cannot be assessed, but a guide can be taken from existing schemes run by Hastoe, with rents in the order of £55-£65 per week. There is a government directive in place, which will standardise rent set by housing associations over the next 10 years.

Achieving 'affordable housing' is a very complicated process. I have tried to give an outline here of how the process will apply in Winsham. The questionnaire will reveal more. There will also be a display, in the shop window, giving more information or contact Mark Dillon direct on 01935 462598.

The next meeting of the Parish Council will be on **Wednesday 5th February at 8 p.m.** in the Jubilee Hall. If you can please come along.



THE YEAR'S STILL NEW!

2003 has been going for a while now so maybe it is time to review all the plans you made when the after-Christmas gloom was becoming unbearable. Are you again too busy, too tense, always running after things? Or on the contrary, lethargic, depressed and wishing spring would get on with it at last?

We have many tools but no panacea. Personally I swear by Ki Aikido, 'the art of not fighting.' Of coordinating mind and body, learning to stay calm whatever life throws at you. (Throw it back! And make friends with it, even!) It is a bit like dancing, people say, when they watch the graceful throws. The power it gives is real and deep, we are not out to impress.

Ki Aikido can be practised at any age (from about 5) and with any degree of (un)fitness. It develops your confidence, awareness and a relaxation, which benefits both mind and body. It is not competitive. In Ki Aikido you cannot lose: you can only stop learning and that is up to you. You are there to improve yourself and your partner is there to help you.

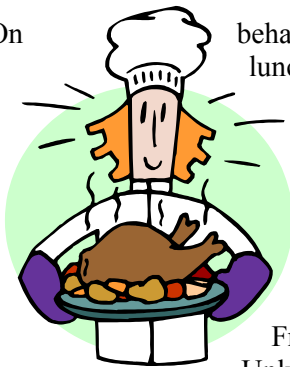
Not like real life you say? See how it changes you. Life is what you make of it.

The lessons are on Monday and Thursday nights in the Jubilee Hall, (nice and close, some of us come from Taunton!) and you can watch anytime. For more information ring Mike or Annemieke Wigmore on 01460 53165.



THORNCOMBE LUNCH CLUB

On behalf of all who attend the lunch club I would like to thank Pauline and her band of helpers for the lovely lunches they provide for us throughout the year. This year finished with a superb Christmas lunch on Friday, 13th December. Unlucky for some but not for us! The afternoon finished with a bingo session with Pauline as caller.



Well done everyone and keep up the good work. Best wishes to you all for 2003.

Mary Hawker



COMPOST CORNER

Look here, this is what I wrote last year: - 'well, at the point of writing this we have had a half decent frost and some snow, it all resembles something along the lines of winter, I know many of you know what real winters were like,', and it goes on and on.



I've seen on the news, a woman that can forecast the weather by the feel of her hair, for example when snow was due. The hairdresser was agreeing, saying that at the moment he could do nothing with her hair. Well what an excuse, he could be a gardener with a lame excuse like that! I've left it a bit late to try weather forecasting with my hair, but never mind, it is easy to maintain.

Some winter tips. Should February be cold as well, then ensure you vent the ice on the pond, but don't crack the ice unless you want to kill your fish, also remove snow as it pushes the ice deeper and becomes ice itself. Remove any excess snow from shrubs and trees (unless it's a leylandii, flattening them at any time of year is OK by me,) the weight is surprising. If you are storing tubers or bulbs of any sort in a cold environment ensure it isn't freezing, 'cos they won't like it, you might need to cover them a little more.

Should the weather be a little more clement, February is a time when you can still do a bit of hedging or planting of bare root trees and shrubs. If laying a hedge the branches should lay uphill. This should be right, being corrected last year, thank you Penny.

You can start planting seeds if you have a warm light space; steady consistent warmth is most suitable, without direct sunlight. In previous years I have mentioned under soil heaters and propagators but unless you're into serious competition, in which case I doubt you'd be reading this, then you're best off on the window sill in February, leave the greenhouse alone until March.

Manure towards the end of the month in anticipation of a reasonable March when you can do some digging. Manuring too far in advance allows a lot of the nutrients to be leached away with this rather persistent rainfall we're getting at the moment. Manure or any feed to the garden only increases the bacterial activity within the top soil which is what you are requiring and there isn't a lot happening when it is -2°C on the surface.

Whoops! Nearly forgot the so-called new format with my plant of the month.

Julie has suggested it should be jasmine, as she was given one for Christmas, the sweepstake is set up, guessing how long it will last. It did have flowers and buds but they have all disappeared already! The supermarket label being vague, as always, simply calls it a “Jasmine.” I believe it is a *Jasminum polyanthum* or Pink Jasmine, called pink because the buds are pinkish; they open out to form clusters of white stars with a delicate fragrance, supposedly in January. Ha ha! The fragrances are lovely with both the delicate tender “indoor” versions and the hardier jasmines that will survive outside all year around. There are 300 species. You have a choice between deciduous and evergreen and shrub forms or climbers, some of which can reach up to 15ft. How about the *Jasminum revolutum* which is an evergreen, it can produce flowers in clusters up to 6 inches long and apparently smells fragrant as well. Judging by the name it all depends on your interpretation of fragrant I guess. Also there is a real survivor of a jasmine, *Jasminum nudiflorum* from China. Yep, if it can survive in China it can survive anywhere, even on sunless north walls. Its leaves are trifoliolate; a leaf that is divided up into three leaflets and it produces bright yellow flowers from November to April. But ‘nudi’ in January? No thanks!

If you’re thinking of buying a new plant then this species may be worth a look at. There’s one for any location in any garden or on a windowsill.

Stephen Rowsell



CHRISTIAN HEALING

As well as carrying out many healings Himself, Jesus commissioned His followers to “preach the Good News to all Creation” (Mark 16:15) and “to place their hands on sick people and they will get well” (Mark 16:18.) As someone once said, the church has been very long on the preaching and very short on the healing.

There are several accounts in Acts of miraculous healings carried out in the name of Jesus, but after the days of the early church, Christian healing seemed to fall into disuse, or be superstitiously attached to holy relics. However, in the 20th century a revival of Christian healing started. People like Dorothy Kerin, who in 1912 was dying of tubercular meningitis when there was no known cure for this disease, was made completely well overnight. Dorothy, who walked closely with the Lord Jesus, and often heard Him speaking to her, started her own healing ministry, based at Burrswood in Kent, which

continues to this day. There are now many other Christian healing ministries such as the Anglican Acorn Trust, and many churches have healing services, or ministry for healing as part of their communion services.

Sometimes healing is instantaneous, more often it is gradual, often doctors are part of the process. Sometimes people are not healed physically at all, but then we will all die one day, and the most important thing is our faith in the saving love of Jesus for each one of us, and our trust that He knows exactly what is best for our lives, even if this involves suffering.

A monthly healing service has been started, alternating between Winsham and Thorncombe. The next Service of Healing and Wholeness will be held in St Mary’s Church, Thorncombe at 2.30pm on Wednesday, 19th February. If you know someone who is ill but cannot get to the service you can always receive healing on their behalf – like the centurion’s servant in Luke 7:10. *MRM*



WINSHAM W.I.



The first meeting of the year started with a minute’s silence in remembrance of Edie Jones. How we shall all miss her, such a kind and helpful soul. Writing this monthly report was another of the many jobs she did.

After the business half hour Mr Peter Duffel gave us a talk on a film director’s world, illustrated with examples on video from a couple of the many films he has directed over the years. We also now know the difference between a “director” and a “producer!” All most interesting.

He did not have much difficulty in choosing the winner of the competition (a potato dog), as there was only one entry, an excellent fox terrier from Mrs Jean Spurdle.

A big thank you to Mr and Mrs J Thompson for allowing us to use their house and video for the meeting. *PP*



THORNCOMBE VILLAGE TRUST

On the Sunday before Christmas, Hazel Comley and some members of her family visited Thorncombe to see the seat in memory of her husband Derrick. The trust would like to thank Nigel Merrett and Richard



Taylor for preparing the site under extremely difficult conditions, and securing the seat in position. Mark Agnew for organising the new stile at the top of Johnson's Wood and Mr Johnson for allowing us to place the

seat off the footpath and make a path to reach it. Philip Smith for making the plaque. Yarcombe Woodland Products at Hinton St George made the oak seat.

Mrs Comley has written to the trust expressing her appreciation.

Members who braved the weather on Thursday January 9th – forty in all – enjoyed a very interesting talk on the “Jurassic Coast” by Richard Edmonds, the County Council Coast Officer. The World Heritage coast starts at Swanage and ends at Budleigh Salterton and is unique. Every major museum in the world has a fossil from this coastline.

Our next meeting is on March 13th at 7.30pm and after this meeting there will be a short **special general meeting** to discuss proposed changes to the Trust Constitution and if accepted will take effect from the A.G.M. 2003. We urge as many members as possible to attend and take part in the decisions.

Did you see.....?

Things that go munch in the night.

A September night, 11.30pm I am just about to creep into bed, next to an already sleeping husband, when some large insect starts to crash at the window, I leap to shut it out – nothing there, the noise is from the garden below. Kneeling on the sill I peer down, black and white stripes move in the dark, a badger loudly eating crunchy things from among the rocks along the path edge. It rootles and munches for a while then potters away into the blackness.

Much later from a deep sleep I surface to an anxious voice asking, “are you alright?” “Mmmm what, yes, why?” “Well, why are you eating biscuits?” “Biscuits? I was sound asleep.” “Oh sorry.” We are quiet. Crunch, crunch. “Badgers eating snails” I explain.

In the morning right round the house and among the tubs in the yard there is a snail shell trail. Thank you badger.
RJS

Those who considered the last quarter of 2002 to have been very wet were indeed justified. The total

recorded rainfall in the parish amounted to 25 inches, more than twice the 10 years' average.



A happy New Year to you all from all at The Bell. We hope a good New Year's celebration was enjoyed by everyone. Sneaky Pete were on top form and really made the evening go with a swing. It was nice to see some new faces and, of

course, all the old ones.

A BIG thank you to everyone who supported us that night and all our regulars who support us throughout the year, we look forward to another successful year in 2003.

Our charity skittles night in aid of the Air Ambulance raised £140, thanks to Fred and Wendy for donating the turkey (28lbs) for 1st prize, won by Gary Partridge. We think they're still eating it!



WINSHAM PRIMARY SCHOOL

A variety of events at school in December meant a busy and enjoyable build up to Christmas.

Carol singing started the festivities. A sizeable group of parents and children sang their hearts out and collected £60 for the Lifeboat Institution. The mulled wine and mince pies at the end of the evening were very welcome! Sorry if we missed but the children were getting tired. Next year we will start at the other end of the village.



Our Christmas presentation 'Babooushka' was performed twice this year. All of the children took part in this traditional Russian story of Christmas. An evening performance for parents and older children and one in the daytime for younger children and senior citizens proved a great success. Again the mince pies and cups of tea this time went down well after the morning show. Hopefully this is the beginning of a tradition that will continue for many years. A collection after the performances raised £60 for Barnados.

The Christmas teashop was well supported by all sections of the community and raised almost £250 for

school funds. A big thank you to the PFA for their hard work and to all who attended.

The whole school took part in a service in church with the theme of the Twelve Days of Christmas. The juniors had written their own version, which they sang with gusto.

The final event was the school party, and again the PFA rose to the occasion and provided the children with a splendid spread. A visit from Father Christmas was the exciting end to the festivities and rounded off a really traditional school Christmas.



IT'S NOT ONLY CATS THAT HAVE NINE LIVES....

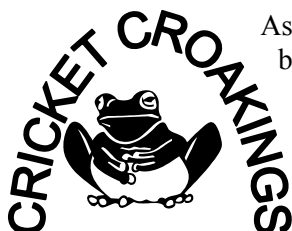


Winsham Art Club has also been living dangerously! That was the theme of the discussions at the club's Annual General Meeting, held in the Jubilee Hall on Friday, 5th January.

Lack of volunteers to take office had brought the club perilously near to having to close its doors after some 37 years, but once again it lived to see another day.

Some twenty members gathered to discuss the difficulties, and it was agreed that the problem had nothing to do with their enthusiasm for the graphic arts. In the end Liz Tadema agreed to take on the task of Treasurer, and Peter Babbs agreed to continue as Chairman. John Sullivan is to continue as Secretary. Penny Pargiter, in her absence was voted onto the Management Committee as its only member.

After that every thing went fine .The club will continue to run its annual exhibition, probably in early May and will continue to welcome new members, especially if they can type or add up!



As the Christmas and New Year break finally came to an end, the tinsel and turkey at the hotel was wrapped up for another year, along with numerous Christmas trees and a mountain of discarded

wrapping and packaging, so much for us all living in an environmentally enlightened society.

With the dreaded Newark virus eventually eliminated, the hotel could resume its usual task of entertaining their happy guests. Their only problem

being the floods and snow storms that made driving conditions hazardous.

The estate looked awe inspiringly beautiful, cloaked in glistening snow, and intrepid guests and residents alike were seen braving the arctic elements, and wobbling precariously around the lanes on bicycles.

On one such wintry evening, as dusk fell, with the snow falling in an enchanting manner, a couple could be seen chasing escapee hens around the wildlife park with pet sheep and wallabies assisting as an interested, if slightly perplexed audience! Luckily it was too dark and cold for anyone else to witness this scene!! Anyone with a camera would have had a field day.

SV



WINSHAM WALKERS

With a light dusting of overnight snow still on the ground, 14 walkers and 3 dogs set off up Back Street for their monthly walk. The route then went by way of Lime Kiln Lane, Chalkway and Hollowells before crossing the fields to Whatley. Crossing over the main road at Whatley Cross the walk continued along the lane to Bridge and onto Ammerham where the footpath through the fields towards the church was taken. We then continued back to the village and our rendezvous at The Bell. Although the conditions underfoot were icy, no falls were reported.



Our next walk is on the 6th February 2003, starting from The Bell at 11.00 a.m. Why not join us!

Further information from Peter Pye - 01460 30751.



THORNCOMBE PARISH COUNCIL

A new Parish Clerk will be writing next month's article, so I'd like to thank Jill, our editor for all her patience and kind support, and a special thanks once again, to Thorncombe Parish Council for giving me the opportunity of working with such a hardworking dedicated team of councillors.

As a result of the cold weather during January a grit bin has now been put in place near the give-way sign at Birdsmoorgate and the Lyme Road B3165. The problem of water on the road has been reported to the highways department. Although the site is within the

Parish of Marshwood, permission was sought, and a local farmer has agreed to have the bin placed on his land. All the bins are now in use and the County will continue to top them up with sand and grit. Parishioners are requested to use this sand and grit when needed. If levels are low, please contact Cllr Janet Walker 01460-30212

A reminder, that sandbags required for use in case of flooding are available. Please contact either Brian Walley our Emergency Officer (01460-30189) or Cllr Mark Agnew (01460-30385) if you need assistance.

Freedom of information publication scheme – A list of the relevant documents for examination by the Public will be posted on the notice boards. A list has also been sent to the editor of the parish magazine, and with luck, there will be space available for publication. *(Sorry no room in this month's edition. Ed.)*

Newsletter and Website –The Website will be launched at the Annual Parish Meeting due to be held on Thursday 10th of April. By now, all entries for clubs/groups and associations should have been received and passed on to Hamish Eyre who is designing the site. If not, please forward them to the clerk as soon as possible, as there is a great deal of

Five Planning Applications had been received:

I/W/2003/0019 April Cottage, Holditch – had only arrived the day of the meeting and as it was not on the agenda, had to be deferred.

I/W/2002/1965 Full Del - Gardners Farm, Holditch. Support without objection

I/W/2002/1977 St Francis Cottage, Synderford. Construct wildlife pond. Support provided the Environment Agency is consulted about water flows

I/W/2002/1990 Land off Whitteys Lane. Erect "Potton" dwelling. (alternative scheme to that approved under I/W/2000/0301 and withdrawn I/W/2002/1327) This was discussed at some length. Object, due to roof height

I/W/2002/2097 Full Del - I Fernleigh Cottages, High St. Erect two-storey extension – deferred

Four Items had been determined.

I/W/2002/1720 - Chard Street (opposite Thorncombe school) - Construct agricultural access. Granted with conditions

I/W/2002/1729 - Lynden Lea, Holditch - Replace guttering. Granted

I/W/2002/1870 - Hamlyn, High Street - Erect extensions. Granted

I/W/2002/0474 - Hodge Ditch, Chard Junction Quarry. Granted

APP/F1230/A/02/1090208 - APPEAL Ref: I/W/2002/0078 - Develop land by the erection of 3 dwellings - Land adjacent to The Lilacs, Chard street. Not granted

West Dorset Local Plan Review - First Deposit.

Please check the notice boards for the dates and places where this can be viewed. Your comments are important and need to be heard.

Any Parishioner wishing to have an item placed on the agenda should contact the Chairman, Mark Agnew or the Clerk (01460-30139) at least seven days prior to the date of the meeting.

work to be done and the site needs to be up and running well before the official launch. Advertising space will be available on the site. The site address will be www.thorncombe.com The second newsletter has been issued and distributed. Pick up points are the Village Shop, the Chapel, the Church, the Social Club, the School, Hibbards and the Squirrel at Laymore.

Council Tax – A report from West Dorset District Councillor, Ian Gillespie, stated there would be an increase of £14 for Band D tax to households. The reason being that £4 was to pay for the recycling scheme coming into operation after April 03, although it is not yet known how this scheme will affect Thorncombe; the £10 balance is due to a reduction in monies allocated by Central Government. The policy is now for more funds to be given to the North of the Country and less to the Southern parts.

Bus Services – The Wednesday bus to Bridport has now been cancelled due to lack of support. As the Chard service is not being very well used, there is a possibility that it may be reduced. Please support this service so that we can keep it.

The next ordinary meeting of the Parish Council will be held on Tuesday, 4th February in the Community Room of the Village Hall. Proposed date of Annual Parish Meeting – Thursday April 10th 2003.



160 CLUB WELCOMES NEW MEMBERS AT WINSHAM

The 160 Club makes a very important contribution to the running costs of the Jubilee Hall. By raising some £400 a year for hall funds, it helps meet its ongoing running costs, avoiding the need to pass all of these expenditures on to those village organisations that regularly use it.

In 2003 the hall will have to meet a bill of some £5,000 for facilitating access and use for the disabled members of our community.

The club runs as a simple lottery, and annual membership costs £5 for the year. Prizes are drawn for each month of the year. If you would like to know more, or like to become a member, please contact Julian or Kathy Dorse, John Sullivan or any member of the Jubilee Hall Management Committee.



IN MEMORIAM

Elaine Marie Duffy nee Taylor Hone, 43) formerly of Winsham, passed away peacefully at Musgrove Park Hospital on 4th January, 2003. Deeply loved by her sister Yvonne and all the family.



I should have written an article for the January edition of the Parish Magazine before I left on holiday towards the end of November, and by not returning until mid-December it was too late anyway. What about 2003 then. Optimism or pessimism?

Reading the prospects for 2003 in the winter 2002 edition of Marketplace, the Lloyds TSB Agricultural Review, profits that rose slightly in 2001 will fall in 2003 to about half of the five year average. We have to look to outside enterprises, rather than relying on producing food, to keep our heads above water. I have always thought that producing our own food rather than importing it, helped our balance of payments. Have I been naïve? Not too good so far.

One item did intrigue me. As the magazine was obviously printed some time ago now, it reported an upsurge in the world price of wheat, which would have a positive impact on our own home commodity price. We usually store our wheat and barley until

the New Year and when I rang up last week to enquire the forward prices, was told our English wheat commands the second lowest price in the world, and nobody wanted the barley. We have sold the wheat at £15 a tonne less than last year and hope for a market for the barley later in the year. Oh dear, not good at all.

Why grow it, I hear you say. With hindsight we wouldn't have planted perhaps, but the crops are drilled in the autumn anyway, so are now up and growing. With the sudden expansion of the EU, and some of the new entrant countries being able to produce at much lower costs, maybe a big re-think will be the order of the day. I am told that Poland could provide vast quantities of potatoes and that the chip factories could re-locate there. Will it get better as you continue writing I ask myself?

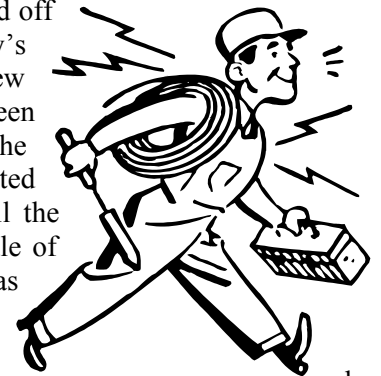
I was talking to a farmer from East Anglia who farms some of the best land in Europe and accordingly pays a very high rent. They produce high tonnages of good quality sugar beet, potatoes, cereals, vegetables, you name it they can produce it. He augments his income by being a comic after-dinner speaker and has just been given planning permission for a quad-bike circuit. If he can't make it pay, how can we on our lower graded land? It's getting even worse, I must be a pessimist mustn't I?

Fortunately I am still an optimist. How could I not be? I am a yeoman and proud of it. *MSH*



A BRIGHT NEW YEAR AT ST MARY'S

2003 really has started off brightly at St Mary's church. The new lighting has been completed, and the electricians are expected to have completed all the rewiring by the middle of January. It was originally expected that the work would have been completed



by Christmas, but at the end of November the electricians reported that timbers supporting the floor at the rear of the church were crumbling away. With two Christmas weddings booked that meant that yet another major maintenance job had to be addressed immediately.

We are most fortunate that local families were able to offer help with labour and resources to get the re-

flooring done in record time. The Eyre family moved the pews into storage at Sadborow, and the Roper family most generously underwrote the expense, and mobilised all forces to get the rotten wood removed and disposed of, and new flooring laid.

Now we have a splendid new floor, and an open area at the back of the church. Several years ago the PCC had plans drawn up along these lines, so it is anticipated that if the Church authorities at Wells approve, the pews will not be reinstated and we shall have flexible space to utilise as we wish. Anyone with ideas or views on this is invited to speak to Ernie or the churchwardens.

As part of the rewiring work, the old cupboards in the west entrance have been removed, and a new fuse box cabinet installed. Margaret Chivers and her team of flower arrangers have had to temporarily store some of their equipment under the altar cloth! If anyone has a shelved cupboard to dispose of that would store vases and troughs, Margaret could give it a very good home.

Another change that visitors will have noticed is the new location for the organ. This is now closer to the congregation, and allows the organist a clearer view of what is happening in the body of the church. Keith tells us this will make it much easier to synchronise what happens on the organ with the person taking the service!!

A less evident change but a particularly important step forward in our church life, is that Ernie has gathered together a band of volunteers to re-launch a Sunday school. The children meet in church, and after a short prayer and blessing, go to the community room for their activities. When it is the family service, they will spend the whole period in the church – i.e. the fourth Sunday of each month. It has been a real concern that since Joyce Speed retired, we have not been able to meet the needs of young families as well as we would like, so our best wishes to everyone involved in the new venture.

So – thanks to all for the teamwork that has helped us through the last few months of 2002, and here's to a bright new future.

What is a sacristan?

As we know, most of us these days are not regular churchgoers, and the names, which were used by the church for various posts are not well understood. However this is the term, which was used for one of the church's most



important volunteer jobs - the person who makes sure that everything is set out which will be needed for a service, particularly the things which the priest will use at the altar.

For many years this job has been undertaken at Thorncombe by June Ede. She has been so reliable and dependable in this that many of us gave little thought to the regular commitment of being there BEFORE the rest of the congregation, to unlock the cupboards, check that the brassware and utensils were put out, that we did not run out of candles, that the collection plate was ready to hand, etc. Yes, and she was the lady who made sure that the water for a christening was nicely at skin temperature and not freezing cold to make a baby scream.

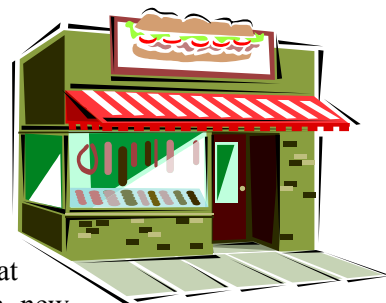
June has now decided to take a well-earned rest (for someone like her, that means being a member of the choir and the guitar group!) We are grateful to Pat Barnes for taking on the role – but we hope in future to have a small team of perhaps three people who will allow for a roster, and in particular let Pat get away to her house in Brittany from time to time. Pat and June have helped compile a ready guide for the novice, so we hope people will not find the term 'sacristan' off-putting. (The word is not 'gender-specific' so men and women can be one!!)

June – we took so much for granted, but please accept our appreciation of your services over the years. With love and our thanks from ALL your friends in the congregation. *HR*



WINSHAM VILLAGE SHOP

Christmas came a little early for us. Only 3 months after opening for business, and learning on the job, we had not ironed out all the glitches that are inevitable with a new project like the shop. However, by means of a prodigious effort on everybody's part we coped with the increased turnover of Christmas (including a special order for over 200 Christmas puddings.) We welcome any suggestions for different lines for next year. Please use the suggestion box in the shop. We are starting a Christmas Club this year. For more details ask in the shop.



One of the new product ranges that sold well has been the Rose Farm preserves. We are now stocking these on a regular basis.

Our next “new products” evening is planned for March when we hope to show a variety of Fair Trade products which aim to give producers a fair price for their products, unlike the supermarkets which do not pay, especially for coffee and chocolate, a price that gives producers an economic return. Needless to say, the savings the supermarkets make in this way are not passed on to their customers but merely go to swell their profits. One of the leading fair trade companies is locally based, in Beaminster, and we hope they will be coming to our show.

As things began to settle down after Christmas, the builders moved back to start what was the most disruptive part of the work, putting the sound proofing on the wall behind the counter. Inevitably this caused disruption. Thanks to all for their patience during what was a difficult time. The next phase, which should be over by the time you read this, will be the ceiling work. After that, we will be more or less finished although we hope to fit new windows to provide a more attractive front to the shop as well as making it warmer and more secure.

Robert Shearer



NOT IN MY NAME – Action against war in Iraq

Saturday, 15th February, will be an international day of action to stop the war. There are plans to have a demonstration or vigil in the square in Ilminster.

For more information, or offers of help, please ring Annemieke Wigmore on 0146053165.



THORNCOMBE W.I.

The meeting this month is on Tuesday the 11th at 2.30pm. Thorncombe artist, Amanda Popham, will talk about and demonstrate her work in ceramics. The competition is for the oldest shawl. Hostesses are Erica Dunsmore and Barbara Fawcett.

MT



LOOK OUT!

Whatever you're facing today, never for one minute think that you can't cope. When you've run out of strength and can't fight on, God will send reinforcements...so start looking for them!

Psalm 16:8

*If you think you are beaten you are,
If you think you dare not, you don't,
If you like to win but think you can't,
It's almost a cinch that you won't.*

*If you think you will lose, you've lost,
For out in the world we find
Success begins with a fellow's will,
It's all in the state of mind.*

*If you think you're outclassed, you are,
You've got to think high to rise;
You've got to be sure of yourself
Before you can win a prize.*

*Life's battles don't always go
To the stronger or faster man,
But sooner or later the man who wins
Is the man who thinks he can.*

