



The Vicarage
Thorncombe

Dear Friends,

This month I would like to say a few words about Mission. It has occurred to me, are we not failing to reach all God's people? I see many at Church services on a Sunday, at weddings, baptism and funerals. There are other times with house communions and casual visiting.

The time has come for the church to reach out and communicate with all God's people. Not an easy task because we have been so long at the centre of the community, and no longer hold that position. So many other activities and attractions take up our time. God is pushed down the list. Ask yourself how much time in a week do you give him? After all as Christians we all have an active part to play in the world, no matter how great or small.

Each parish priest in the country has been sent a video called "Restoring Hope in our Church". I would like you to invite me to your homes with this video and share your thoughts afterwards. Change, thought, vision guidance and hope for the future are needed.

By the time this magazine reaches you one of our outreach efforts hopefully will have been completed. That is the Rogation Walk on the 25th May between Thorncombe and Winsham. The other outreach effort will be the Family Animal Pet Service on Sunday the 1st of June at St Stephen's and on the 29th June there will be a service on the lower recreation ground at Winsham and around the village.

Another highlight of this month is the Team Picnic/Eucharist on the 8th June at 4 pm at Forde Abbey when all the churches in the Chard & District Team Ministry will unite for this service and all are welcome to attend.

At the end of the month 29th June the 10.30 am service is when St Stephen's Winsham and St Mary's Thorncombe join together for a united service at Thorncombe. This is the Festival Day of St Peter and St Paul Apostles.

May you have a happy month.

Ernie Chivers



FROM THE PARISH REGISTERS

THORNCOMBE

Marriage of Tom Eldon Owen and Rebecca Rose Dunsby – April 26th

Marriage of Barrie-John Timothy De Seja-Martin and Sandra Louise Rowley - May 3rd

Baptism of Grace Anne May Goodall - May 4th

Funeral of Barbara Patricia Sibley – May 9th

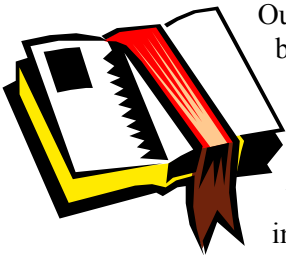
Funeral of Alan Charles Smith – May 14th

WINSHAM

Baptism of Jake Michael Jon Woodman May 11th



THE BIBLE SOCIETY



Our annual spring meeting will be held at Thorncombe Chapel on Wednesday, 4th June at 7.30pm with the Bring and Buy from 7pm.

We have a small committee in Thorncombe comprising of Elsie and Bert Vickery, Brenda and Mrs Forsey and Olive Mitchell, so we really do need the help and support of as many people as possible! Last year with your help the meeting raised £91.50 for the Bible Society's work; this was from the bring and buy and the collection. The Bible Society is non-denominational and provides bibles, scripture portions, literacy support material and audiocassettes all over the world. The Amity Printing Company in

China has printed more than 30 million bibles and new Testaments since 1987. Ma Wei, who is visually impaired and works for the company says, "God guided me to the place where scriptures for the blind are printed so I could encounter His work, which opened my heart to receive Jesus and become a child of God."

If you have not been to a meeting before, you are assured of a warm welcome; we always have a very happy and friendly meeting. We shall sing some hymns to Brenda's accompaniment and there will be a 15-minute slide show entitled "Changing Hearts and Minds," which includes the Bible Society's response to disasters in Mozambique and other countries. It also features the Miracle Maker and Green belt. Everyone is welcome. *OMM*

UNITED REFORMED CHURCH WINSHAM

Minister – Revd John McMinn – 01935 872105 **Hon Secretary** – Michael Hebditch – 01460 30201

Sunday services at 10.30am. 1st Sunday, tea and biscuits after the service. 3rd Sunday Holy Communion
3rd Thursday 12.15-1.30 monthly Soup & Cheese Lunch at the Sports Club



THORNCOMBE CHAPEL

Normal Sunday Services: 11am and 6.30pm. Every 2nd Sunday at 11am is a Family Service.

A welcome to everyone.

Ladies Bright Hour: Alternate Wednesdays – 2.30pm. A welcome is extended to all ladies to join in this special hour followed by tea and biscuits and a chat.

Saturday Club for Boys & Girls: 11am to 12.15pm every Saturday. This is an exciting club for boys and girls of 4 years and over. It has a mixed programme of bible stories, quizzes and many other activities.

Enquiries 01460 30267



ROMAN CATHOLIC CHURCH CHARD

Priest: Canon James O'Brien – 01460 62197

Services: Sunday Mass - 8am and 11am. Weekdays – 9.30am. Holy Days – 9.30am
Confessions – Saturdays 11am – 12 noon.



FAMILY SERVICES – ST STEPHEN'S

Our Family Service in June will take the form of a Pets' Service.

Those of us who have pets, whether they be rats, mice, hamsters, guinea-pigs, horses, dogs or cats (and any I have forgotten!) know how important our pets are to us. They are thought of as members of the family and therefore we would welcome everyone, young and older, to bring your pets, large or small, to church on June 1st so that they may be blessed.

At our service on 6th July we will welcome the Archdeacon, Rev John Reed, who will dedicate the railings, which will shortly be fitted. This will be followed by a light lunch in the Jubilee Hall. *JP*



RNLI

The Chard branch of the RNLI wish to thank all those people who so generously supported us at our coffee morning on 7th May at Winsham Jubilee Hall.

The sum of £217 was raised towards funds. We would also like to thank all those who collected used postage stamps and foreign coins. These will also be used to raise funds to help save lives at sea. Thank you. *AE*

The RNLI is now no longer using used stamps to raise funds. The reason being that their value has dropped to the extent that the cost of processing exceeds that of income received. So very many thanks to all of you who collected; it was worthwhile. *VB*



JUMPING BEANS

Our annual Cream Teas will be held at Jan Walker's house on 25th June from 2pm. Do come along and join us. *CR*

THORNCOMBE VILLAGE HALL TRUST

The coffee morning held in aid of the Village Hall Trust raised £180. Many thanks to everyone for their support. Special thanks to Joan and Roger Lovegrove for running the bookstall and Jan Walker for organising the raffle. *VD*



WINSHAM STREET FAIR COMMITTEE

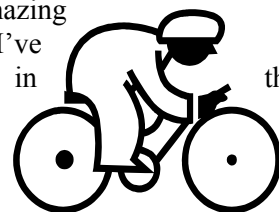
We would like to thank everyone who supported our recent race night, which raised over £400 towards next year's fair.

We are having a Halloween fancy dress party on 31st October – hope to see you there. *NS*



A PILGRIMAGE ON TWO WHEELS FOR THE NAZARETH HOSPITAL

I've volunteered for an amazing challenge in November! I've been accepted to take part in the EMMS Bike Ride 2003 for the Nazareth Hospital, "Cycle the Negev Desert."



One part of the challenge is to cycle about 220 miles in 5 days over fairly hilly terrain, much of it off-road through desert, over the Ramon Crater, and through the lands of the Bible. It will take all my resources of energy and stamina, but I am inspired to achieve this for a very good cause – all in support of the Nazareth Hospital in Galilee, which is owned by EMMS International.

The second part of the challenge begins long before I go to Israel on 1st November, though! By taking part in this 12th EMMS Bike Ride, I've committed myself to raising a least £2,000 in sponsorship. **I need your help to achieve this in support of the hospital.**

This is a hospital with a very special ministry of Christian love, bringing together all races and religions – Arab and Jew, Christian and Muslim – to work and learn together, to heal differences and to build peace and trust in a troubled land. This is of particular importance at this time of potential conflict in the world.

I won't be doing this on my own. I'll be in company with about 50 others from various parts of the world, and together we aim to gross over £250,000 for the Nazareth Hospital, to help them raise funds to develop the skills of the hospital staff and in turn provide quality patient care. I am particularly excited that after the Bike Ride we will also have the opportunity to visit the hospital, to meet the people who work there and to see for ourselves the needs that will be met by our bike riding efforts and by your support. This will be a very special visit.

At the bottom of this letter there are more details about the bike ride – I hope you will want to read this to find out more about why I'm asking for your help to meet the target I've set myself. Although £2,000 is the minimum sponsorship target for each rider in this bike ride, I'm aiming beyond that target. To achieve this on behalf of the hospital, I'm asking for help from my family, friends and colleagues, from businesses and organisations and from anyone I can think of! **Please will you support my efforts for the Nazareth Hospital with a sponsored donation?** I hope the time and energy I'm giving for the hospital and the sweat and tears! will encourage you to be as generous as you can in support of such a worthwhile cause.

Your donation, payable to EMMS Bike Ride (Nazareth Hospital) can be sent to me, along with the donation slip. I promise you my personal thanks for your help and the gratitude of all at EMMS, and you can be certain that your donation will be greatly appreciated by all the people of Galilee who will benefit from the services that the Nazareth Hospital provides. *(Copies of the details together with the donation slips are inside St Stephen's, St Mary's and St Thomas' Churches.)*

With warmest thanks and good wishes.

M Stephen Kivett – Team Rector



WINSHAM WOMEN'S ROYAL BRITISH LEGION

At our meeting in April eleven members attended. At our recent coffee morning £160 was raised and thanks were extended to all who helped and supported us. The draw books on sale were in aid of the W.S. Benevolent Fund.

Mrs Margaret Thresher, who breeds Polish Lowland Sheepdogs, was our speaker. She explained that they were bred in Poland but during the war many

disappeared. They are now bred in this country. Mrs Thresher brought two of her dogs with her, William who has won at Crufts and Jazz, a recent rescue dog but who has now been found a new home. They have very woolly coats and need a lot of grooming and plenty of space. They are a very friendly breed of dog. She together with William gave us a short demonstration of obedience work. *MF*



THORNCOMBE RAIL ACTIVITIES CLUB

The speaker at our April meeting was Tony Carter who came to talk to us about "A Day in the Life of a Country Stationmaster"

Tony led us through a normal day at his station from early morning to the end of the day after the last train had left.

His responsibilities covered not only the passengers and all that involved; overseeing the issuing of tickets; checking that season tickets were current and not in need of renewing; that advance luggage was in the right place; the goods yard was operating properly and the signal box was staffed! As well as all that there was, of course, the paper work, which had to be kept up to date. He was also responsible for arranging special trains when needed to cover local needs and to make suggestions for the improvement in services where necessary.

During his time as stationmaster the one hundredth anniversary of the opening of his station occurred and he was able to arrange a special event to mark the occasion. Several hundred people came to see the display laid out around the area.

Inevitably there were occasions when things did not quite go to plan, such as the occasion when a sheep escaped and disappeared from the station only to be found later contentedly grazing in the churchyard!

Tony brought along a video showing the line of which his station was a part. Members were able to see where he had worked and hear interviews by him, as well as others, who had worked on the line; their memories of the time before the inevitable closure came along post Beeching.

Any inquiries please telephone Michael Sheasby on 01460 30474.



WINSHAM WOMEN'S INSTITUTE



On April 7th nine of us climbed into a mini bus and were taken to Westland's at Yeovil for a marvelous evening organized by the County Branch. W.I. members from all over Somerset filled the hall to listen to Jenny Bond, the BBC's royal

reporter, telling us about the years that she has followed various members of the Royal Family around the world, and reported on their activities to the BBC cameras.

She thought originally it might be a dull duty but soon found it to be anything but. Cold, wet, hilarious, uncomfortable, exciting and, yes, moments of boredom but seldom dull. She ended by answering written questions from the audience. This finished off a very good evening, which was made even more so by the fact that we did not have to drive home!

Our own evening on 10th April in the Jubilee Hall was not quite in the same league, but as usual a pleasant time was had by all. After the business proceedings, which included some interesting outings coming up, we had a very good talk from one of our most talented members, Mrs Pam Rawlings.

She had a large selection of her wonderful cushions, which she described individually and for those of us who are not sewers, amazed us with the variety of materials and methods which can be used. Even for the seamstresses among us, there was plenty to learn. Apparently she made her first wearable dress when she was about eight. I'm sure I was still pushing raffia through holes in coloured cards at that age.

Before our final tea and eats, we were each given two teabags from D.J.Miles and Co., who asked if we would help in a country-wide experiment to answer the perennial question – which tastes better, milk in before, or milk in after the tea? We are to invite a friend to taste blind and see which they prefer!

We were also given three onions each, to grow and compare in October!

The competition was a design for a cushion cover, which was won by Mrs Jean Spurdle and earned her 10 points.

PP



THORNCOMBE VILLAGE TRUST



Our A.G.M. took place on Thursday May 8th in the Village Hall. 51 members attended. The chairman, John Dalziel, reported a year of very well attended meetings and the treasurer,

Linda Timms, reported a healthy financial situation. We were then entertained by a very interesting talk on 'Colour in the Garden' by Kath Crouch. The hall has recently been re-decorated and there are some beautiful paintings of flowers hanging on the wall and these complemented the theme of our evening. The Trust has a number of new members on the committee and we look forward to an interesting year.

Why not join our field trip to Powerstock Common on June 8th – see 'This 'n' That.'

JL

Did you see.....?

The chorus of bird song, which heralds the coming of spring is once more past its peak. Nowadays the great bulk of the singing comes from blackbirds with support from a smattering of song thrushes and mistle thrushes accompanied by smaller birds such as robins, finches and tits. Fortunately not only are blackbirds doing well in a hostile world, they also continue to sing for some weeks despite their domestic responsibilities. Twenty years ago they would have been supported by a strong undercurrent from such as larks, linnets, cuckoo, whitethroats and willow warblers, all of which have almost vanished from many areas, thanks to the activities of man in his pursuit of cheap food production. Happily experiments with variations in the methods of culture plus greater discrimination in the use of herbicides, insecticides and fertilisers have already demonstrated that many kinds of wildlife including birds quickly respond to such changes and we must hope that their introduction will become general at least in Europe.

RM



WINSHAM PRIMARY SCHOOL

May is always a very busy month in school as it is "SATS" time. As in every school in the country, pupils in years 2 and 6 are assessed in English, Maths and Science during this month. Fitting these tests into the normal school timetable needs flexibility on the part of all staff and children, and we all breathe a sigh of relief when they are finished. In addition this year there is a new set of teacher assessments for children at the end of the foundation stage – or at the end of their first year at school. Life in the infant class can feel like one long round of box ticking! Meanwhile we try to fit in some teaching.

The infant's topic this term is plants and animals in the local environment. A recent search around the school playground turned up a variety of mini-beasts and several children have become proud owners of pet snails!

The junior class are studying the Somerset Levels and will soon be visiting the Willows and Wetland Centre. Will we see a willow man on the school field?

With the good weather lately, outdoor sports activities have been very popular. After-school clubs for athletics and rounders are all well supported, and lunchtime has seen many children being energetic on the school field. A visiting coach from Somerset Cricket Club has been teaching cricket skills. We are also shortly starting an after-school computer club for those of a less sporting nature.

THORNCOMBE W.I.



We enjoyed David Andrew's visit so much last time that we invited him back to share his "Music Hall Mayhem" in April. Members sang, clapped, banged and hooted on a variety of instruments – sometimes in time, most often not! No matter what, the laughter and enjoyment made up for our lack of rhythm and tune.

A report on the Spring Council Meeting was deferred until the next meeting. Sheila Joyce won the competition for 'an interesting silver ornament' and Julia Snellock won flower of the month.

The June meeting on the 10th will be a talk on the "Leukaemia Research Foundation" by Richard Delderfield. The competition is for 'a locket – old and modern'. The hostesses will be Julia Honeybourne and Eileen Bray. Don't forget flower of the month.

The outing to the Tiverton Canal will be on June 17th. There will be a coffee morning at Easthay Farm on June 25th from 10.30 – 11.30am. *MT*



HOLDITCH HALL

The Holditch Hall Committee would like to thank everyone who helped to make our Cancer Research Auction such a success. The final figure was £1876; this included the bookstall.

A big thank you to our long-standing auctioneer, Bert. The total now raised over the years by the Hall for Cancer Research totals £28,000. Many thanks.

Holditch Hall Cttee.



ST MARY'S THORNCOMBE - Can you take up the challenge?

As mentioned in last month's magazine, members of St Mary's congregation are being invited to make use of their talents to increase the church income. The challenge is based on the New Testament



lesson of the master who gave his workers money to keep against his return. Some increased the original amount many times, while others carefully looked after the money and returned it without interest.

The idea is for church members to take a loan of £20 from the PCC as a 'starter' for their own personal fundraising effort, in whatever direction their own interests and skills lie.

Our Team Rector, Stephen Kivett, will lead the service on 1st June, which will mark the start of the talents campaign. We hope as many people as

possible will feel able to take up the challenge – but it is strictly voluntary, so please don't stay away! *HR*



CHARD & DISTRICT TEAM SKITTLES

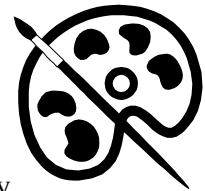
By the time the magazine for June is out, the church members of Chard and District will have had three energetic evenings of skittles at the Creamery. At the time of writing we can report that over 60 people had a great evening when Chard St Mary's and Chard Furnham played Tatworth and Chaffcombe. This resulted in a Chard win so they go on to meet Winsham/Thorncombe/Cricket St Thomas in the second match.

Watch for a Stop Press announcement of the winner!!
HR



WINSHAM ART EXHIBITION

The exhibition was held in the Jubilee Hall from 9th – 11th May. About 70 tickets were sold for the wine and cheese preview party on the Friday, which, as usual was a very happy "village do." There were a lot of raffle prizes beautifully decorated and presented by Lizzy Tadema. "Last time ever," she was heard to say, and who can blame her? She had, as usual, put a great deal of time and thought into it. Special thanks must also go to Nancy Bailiff for exceptional organisational skills, the Sullivans for publicity and screens and Joan Aslett for organizing the eats, especially with so much else on her mind. Thanks to so many other helpers, which made the whole thing go with its usual swing.



The artist, Rein Fullylove, came all the way from Dorset to judge which 6, from the 100 or more paintings, should have a "Highly Commended" card attached to them.

For the first time this year we had a small picture section, which proved very popular and a lot were sold to appreciative visitors. Nine larger pictures were sold and the box for the visitor's "favourite picture" nomination held a very mixed result, proving how varied and good the paintings were this year. Something for everyone.

Diana Jarmarkier, in fact, got both first and second place with 5 votes for number 35 – Wayford Woods and 4 votes for number 31 – Garden Gate.

Thanks to everyone who helped so tirelessly. See you all next year?

There will be two painting afternoons in June. On the 10th June at Heron House, Bridge, the home of James and Tricia Goddard and 24th June at

Hazelwood Farm, Chard Road, Winsham, the home of Roy and Janet Smart. PP



COMPOST CORNER.

June is here again, long days and warm weather, don't you feel good already?

Have you got a greenhouse? This spring must have been interesting if you kept an eye on the thermometer, and watering the seedlings must have been challenging; still I'm sure all is well. When the time comes to plant out bedding plants, treat them carefully, especially when getting them out of the pots and trays; a good tap on the bottom is a good start; some will need to be pushed out if the roots have come through the bottom. All planting should be done in weeded and fed beds, tubs or baskets. The smaller the container the more regularly you will need to water and feed. Baskets will need watering, ideally twice a day, even if you have incorporated the latest moisture retaining crystals and gells.

As the likelihood of frost has passed, plants such as marrows and pumpkins can go out, on a mound is ideal. Already established tomato plants can also be planted out of doors. There is some feeling that, in a sheltered sunny spot, they will do better than in a greenhouse, even with shading or white washing the glass; this is because the temperatures aren't so high. Just support the plants by tying to canes but not too tightly, as the plant will continue to grow. Feed your tomato plants with a tomato feed; this can be used on all manner of crops. Sweet corn plants or seed can go in now. Plant out in blocks to aid pollination and in the sunniest location possible. Now is a good time for sunflower seeds to be sown. Dahlias will need feeding and supporting; some are capable of growing up to 5 feet in ideal conditions.

Fruit will be ripening on the early varieties. You'll know when the gooseberries are ripe because all of a sudden, one morning they'll be gone, down the throat of a blackbird or two, unless in a cage or under a net. One of the few uses for a cat comes to mind here as well!

Hopefully all the seeds you had sown in previous months have germinated and you can see continuous lines of light green young tender leaves. If all looks barren, sow again or just sow the later sowing of carrots, beetroot and lettuce to give yourselves a continuing supply of fresh veg. If you want mini versions just leave them crowded and pick early, except mini sweet corn. I hate them, but many don't; specific seed is available for these.

My plant for June, is 'um', not sure even as I'm writing this. A quick look out the window and I've got it, the dandelion, weed or salad vegetable? Our rabbit loves them but I must confess I've never tried one nor am I likely to. Believe it or not there are four

kinds of dandelion. The main variety is officially known as *Taraxacum officinale*, there is also a Lesser Dandelion that has purplish flowers and prefers dry soils. *Taraxacum laevigatum*, a Marsh Dandelion, *Taraxacum Paludosum* and a broad leaved Marsh Dandelion *Taraxacum Spectabile*. The flowers are referred to as fruits. The seeds that make the 'clock' are known as pappus.



See, so they aren't fairies really, just more blessed weeds next year.

The editor's correction made last month regarding the flower of the horse chestnut "large pinnacles of white flowers", should have been 'panicles'. I appreciate my spelling and grammar are atrocious, but I got this right because I copied it from a book! (*I stand corrected! Apologies. Ed.*) SR



THORNCOMBE PARISH COUNCIL

As I write this article, the council is in an unsettled period. There are currently only two council members; this is not enough to form a council. Therefore another election has been called for 12 June 2003 providing there are enough candidates to stand. At present the council cannot conduct its usual day-to-day business; however most organisations have granted the council extended time periods to reply to their business. This means that the new council will be able to deal with most of the issues raised during this unsettled period. If you have any queries or concerns in the meantime, then please do not hesitate to contact the Parish Clerk, who will be happy to help. (Lesley Barnes 01935 891971)

On to a more cheerful note. The Annual Parish Meeting of the Council held on the 15 April 2003 was reasonably well attended. Local organisations gave reports on their year's activities and achievements. The Right Honourable Oliver Letwin MP launched the Thorncombe Website. **Have you visited THORNCOMBE.COM yet?**

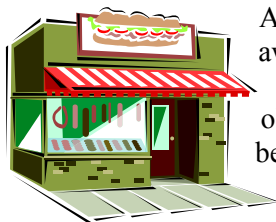
I have received correspondence from West Dorset District Council concerning the closure of a footpath - Thorncombe Footpath 60, which crosses land at Westford Mill. The Parish Council has been asked to comment on this. Due to the council's current circumstances, I have asked the District for an extension of time for our reply. This has been granted until the end of June

Please keep your eyes on the village notices boards. As soon as I have information regarding the status of the council, it will be posted here, along with details of the next meeting, which should be the Annual Meeting of the Parish Council. Any parishioner wishing to have an item placed on the agenda should

contact the Clerk in writing at least seven days prior to the date of the meeting.



WINSHAM VILLAGE SHOP



At the time of writing we are awaiting delivery of a new display freezer to replace the old chest freezer, which was beginning to show signs of old age. By the time you read this it should be up and running. The new purchase will allow us to stock a wider range of frozen foods and display them in a way that will make it much easier to see what is available, as well as easier to select them. We will also be able to approach the summer with a good range of ice creams. To promote this improvement, in the first 2 weeks of June we will be offering everyone who buys a frozen product a ticket, which will be placed in a draw for one of 6 cool bags. The lucky winners will be able to keep their food chilled for picnics etc. throughout what will no doubt be a warm sunny summer. If you have any particular favourite frozen foods that we do not currently stock, please let us know and we will endeavour to stock it. As always, we cannot guarantee to stock everything people might want but, if there is a demand for something and we can get it, we will do so. One of the limiting factors is the fact that wholesalers often require a minimum order. It affects our cash flow if we have to buy 20 of something, and only sell one while the rest sit on the shelves. Many people will be aware that the house, which also houses the shop, is up for sale. Customers do not have to worry about this. The Shop and Post Office have a ten-year renewable lease and our future is therefore secure (always provided we continue to get your support.)

Robert Shearer



Pre-school is facing a very big problem. There are not enough children registered to start in September to allow us to continue, therefore it faces closure. If you have a child of 2½ years or over, do come to our open day on 11th June. Come and meet the staff and bring your child to play. There will be a variety of pre-school equipment on show as well as cake, toy and bookstalls. Entry will be 40p, this to include refreshment.

AE



A Quote from a Child:-

Moses died before he ever reached Canada.



The European Agricultural Mid Term Review has been issued in draft form for discussion. Decoupling, Cross Compliance, Modulation/Degression, Sector Issues, Change of Ownership, Landlord/Tenant, Retirement, Death and Changes in Partnership are all involved. I won't bore you with all the details as this would fill up this magazine in its entirety.

Decoupling is where, rather than direct payments based on crop areas grown and numbers of animals kept, there will be a single decoupled payment comprising all current direct aids. Direct aid sounds better than subsidy, of which there is a multitude. Those with plenty of office time available can take advantage of many schemes but the paper work is onerous to say the least. Decoupling will be based on claims made in 2000-2002, (the Reference Period) and relate to land farmed in that period. What is farmed after 1st January, 2004 will not affect the payment. It is obvious that farmers and partners will not retire or make change of partnership until after next January.

You are puzzled or confused already I suspect, so what does this basically mean. Simply, that farmers will be able to receive payments in future, based on the subsidy claims made in those two years, and farm the land or not as they please, subject to maintaining a minimum standard of maintenance.

The impact of the CAP reform proposals on farm income would be down from the projected level in 2009. There would be an increase in voluntary set-aside. Dairy farmers will get a small increase in milk quota and direct payments for quota held on 31st March next year, but with a reduced target price of 25% by 2009.

I'm sorry to have written such a boring article but the effect on the future of the countryside could be significant. Philip Rothwell, of the Royal Society for the Protection of Birds, has said: "There is the potential for a change in the British landscape as big as anything since the Enclosures Acts."

The CLA (Country Landowner and Rural Business) are concerned that direct aid should not be taken away from the farmland. Farmers could retire and take the payments with them. This would make profitable farming for the incoming farmer difficult. With falling farm gate prices he would have to be very intensive and no way could he farm organically. Some years ago our vet, who is now retired and an expert on wild life in all its forms, told us of the probable future behaviour of some birds. This week I saw, for the first time, one of his predictions. I was ploughing in "Barnham's Field", named after Gordon and "B", when a flock of buzzards landed on the ploughing to have a feast. Although they have been

changing from a pair who expected their progeny to make their own way in time, to flying in groups, this was something completely different. It must be an illusion, but no, there were really twenty to twenty five of these magnificent birds landing and taking off. *MSH*



May has been a relatively peaceful month. The weather has been glorious, with the ground elder growing from strength to strength as it tries, gallantly, to smother my entire garden!

Within the wild life park two beautiful leopard cubs have been born. A CCTV has been installed within the enclosure to enable visitors to watch the furry bundles; it will be some weeks before the cubs will be able to venture outside. Caius and Amber, the two cubs that were born in 2001, are now both happily ensconced in their new homes in Copenhagen and Hampshire, with their respective new mates. Hopefully this will help replace the rapidly decreasing numbers of these very rare Amur leopards.

Also within the park the new camel house is finished and looking frightfully smart, with the resident camels, now they have lost their winter "Rasta" locks, looking suitably respectable.

The leisure club has had a very busy month. New equipment for the gym, to inspire even the most reluctant members to "fight the flab", a running club around the estate back in action and circuit training planned for the end of the month. The end of May saw a Casino and Race evening for members, and a charity triathlon is planned for June.

Finally congratulations to Kate Page and Joel Penrose who were married at Cricket St Thomas on May 17. *SV*

WINSHAM PARISH COUNCIL

The Parish Clerk writes:-

The new Parish Council met for the first time on Wednesday 7th May. I will be honest, the events took me by surprise, and I had a plan i.e. an agenda for the 'AGM' and one for the 'Ordinary Meeting'. Someone answered the phone in the Jubilee Hall. There was some problem in Western Way, obstruction to the highway, refuse bags in the road, what was to be done, call 999. Someone did call 999, from the phone in the Jubilee Hall. The meeting progressed in some confusion. What was happening in Western Way?

The police did not respond but requested that SSDC clear the obstruction in the highway i.e. the plastic litterbags. The District Council's out of hours' team

were called. The police did not attend the scene but reprimanded the person, who in good faith, called 999.

What is to be learned from this extraordinary event? If you do not know the right agency to call, then 999 is obviously the correct number to contact. However with hindsight you should call Portishead on 01275 818181. Another important number to remember is 01935 479815. This is the out of hours' service for South Somerset District Council's Environmental Heath Department. Any fires spreading toxic smoke or any noise nuisance, out of hours, should be phoned in to this number.

If we look back at the incident, the bags were removed before the clearance team arrived, perhaps by the people who put them there in the first place; but time and the resources of the public agencies have been wasted. Local people were upset and put under unnecessary stress. The Parish Council meeting was thrown into disarray. This perhaps illustrates an example of unsocial behaviour on the part of whoever placed the bin liners in the street in the first place.

The Parish Council has received a number of complaints from residents regarding the alleged unsocial behaviour of their neighbours. The Parish Council will support any elector who feels he or she is suffering from the unsocial behaviour of their neighbour, by pointing them in the right direction for help, but residents must firstly help themselves. They must keep diary sheets of any activity they regard as unsocial behaviour. It is no use phoning and complaining after the event. Diary sheets for housing related problems are supplied by Lisa Clancy of South Somerset Homes 01460 238828. For environmental health problems diary sheets are available from Guy Sharp of SSDC 01460 260348.

After about half an hour of confusion the activities of the Parish Council moved on. Three new members were welcomed to the team, Mr Peter Harper, Mr Simon Fewkes & Mrs Nicola Slade. The AGM progressed. Mr Colin Slade was elected Chairman & Mr John Sullivan Vice Chairman. Other posts were filled as follow: -

- a) Representatives on the Jubilee Hall Committee-Mr J Sullivan & Mr Roger Beer.
- b) Representatives on the Recreation Ground Committee-Mr Keith Marsh & Mrs Nicola Slade.
- c) Governor - Winsham Primary School-Mr Peter Pye
- d) SALC representatives-Mr Peter Harper, Mr Peter Pye & Mr John Sullivan, all, as and when required.
- e) Cemetery Officer-Mr J Sullivan

- f) Amenities Officers-Small Rec./Play Equipment-Mr Peter Pye & Mrs H Duke
- g) Responsible Financial Officer-The Clerk & Mrs Nicola Slade
- h) The Internal Auditor-Mrs Mary Pye
- i) Highways Officer-Mr Keith Marsh
- j) Village of the Year Competition, contact Mr John Sullivan or Mr Simon Fewkes
- k) The Tree Wardens-Mr G Peacock & Mrs S Abbey
- l) The Planning Committee-Mr Colin Slade, Mr Peter Harper, Mr Peter Pye, Mrs Hazel Duke & Mr Roger Beer.
- m) Footpaths Officers-Mr Dennis Shaw & Mr Peter Pye
- n) The Neighbourhood Watch Co-ordinator's job remains vacant. (Your house insurance premiums may be at risk).
- o) The Emergency Planning Officer's job remains vacant.

After all the above, and in my opinion, the most important item on the agenda was 'Rural Housing'. We are making progress in two directions. The 'Task Force' has met and looked at sites for 'Affordable Housing' around the village. Sixteen plots of land have been considered for potential sites. The Parish Council is involved in the discussions but the choice of favoured plots must remain in the hands of the professionals, and of course the landowner has to be willing to sell at the right price. The second way forward is to proceed with a further survey so that the project can be planned in more detail. An explanatory letter and a questionnaire will be distributed to all households in Winsham between 19th & 31st May. Look out for the display in Winsham Shop about 'Affordable Housing'. Last May we had a 44% return of questionnaires. We are hoping for a similar or better response to help the project move forward.

Due to time constraints on the meeting, discussions on the skateboard project and speed watch had to be shortened and deferred to the next meeting.

The 'skateboard group' are organising a car wash for 17th May, too late to advertise in this publication but a successful event will go a long way towards supporting their project. Good luck!

The next meeting of The Parish Council will be held on Wednesday **4th June at 8 p.m.** in the Jubilee Hall. If you can, please come along.



ABOUT BUGS, GREMLINS AND THINGS THAT GO CRASH ON THE COMPUTER

April was not a good month for my efforts relating to the Parish Web Site and the Winsham Web Museum. The marvels and miracles of modern computer

technology are wondrous to behold - when they work. But sometimes they don't, and I emerge into May quite a lot poorer in financial terms, but perhaps wiser in the ways of memory chips, motherboards and graphics cards and the software which is supposed to make them work!

So my hopes of announcing the launch of the Winsham Web site, against a background of a fanfare of trumpets and heavenly choirs, were rudely dashed. Still it was not all bad news. The problems have been sorted with the help of Caroline Fowler, and the preparation of material to be placed on the site is virtually complete. It may be that by the time you receive your June Joint Parish Magazine the web site will be up and running. Details will be displayed in the Winsham Shop.

In view of this I will, as promised in last month's magazine, summarise what you can expect to find on the site.

Parish Notice Board ...this will give details of parish events to come. We can only place information we are given, but we will usually be able to display notices on the site within 24 hours of receipt.

Parish Council & Local Government Information.... it will include details of the membership of the Parish Council, individual responsibilities, agendas and minutes of meetings, and information published by the Parish Council such as official notices, cemetery regulations, etc. There will be a link to the SSDC web site, which is well worth a visit –it contains a great deal of information. Web Pages devoted to **the Shop, St.Stephen's Church, the Chapel, The Bell, Jubilee Hall, Winsham School, the Sports & Social Club and Davies Close** will also be found.

Parish Organisations are also included as well as details about **local medical services, Churches**, etc.

Also as part of the facilities of the site will be the timetable of the **99 Bus**, and links to obtain details of **Air, Rail Coach and Ferry travel**, as well as special community transport facilities.

These are early days in the development of the site, and other areas of information will be added as ideas develop and time allows. Send us your ideas to: winshamparishcouncil@btopenworld.com.

Remember that you can also register for the Parish Council Message service using the same address.

John Sullivan (30026)



CHURCH PEWS FOR SALE

A number of pews from St Mary's Church, Thorncombe are available at £100 per pew. Each measures about 10 feet long. For further information contact P R MacCrimmon – 01460 30773.



