



Dear Friends,

We are all hoping and praying that June will be kind to us as the Golden Jubilee celebrations get into full swing. It will provide an opportunity for every one to get to know each other better and enrich the life of our villages.

Making journeys is an important part of our lives whether to meet friends and family or planning an interesting holiday. Well planned arrangements will make sure you get to your destination and back safely. Especially reading the signs and symbols and acknowledging the advice they may give.

In our Christian journey through life we need to be watchful looking for the signs and symbols that may come our way. We know that Jesus is the way to the kingdom of heaven, and like a good traveller - we know that there are signs and maps and guides to help us. One such guide is of course the Bible. Another guide or signpost is the Christian Church. Another signpost or direction board is found in the lives of good men and women in the past, and those around us today.

Look for the rainbow with the lovely spectrum of its colour, gleaming in the sunlight, We know that it is a symbol of hope, as it is the refraction light against the falling rain. The rainbow is built on the preceding storm. It is a symbol of hope arising out of darkness; it is a Bible symbol, since we can remember how, long ago, God himself appointed it as a sign that the great disaster of the Flood was ended.

Have a safe journey, and watch out for the signs and symbols, both physical and spiritual.

Ernie Chivers



AN ANGLICAN ALPHABET

P IS FOR PYX. A small silver or gold box in which the Blessed sacrament may be carried to the sick.

P IS FOR PATEN. A small silver or gold plate on which the bread is placed at the celebration of the Eucharist.

P IS FOR PALL. A small square of card covered by white linen placed over the chalice at the Eucharist. It could also be a white, black or purple velvet cloth placed over the coffin at funerals.



WELCOME TO

Mrs. Ann Clarke, 2 Knapp Cottages, High Street, Thorncombe.



FROM THE PARISH REGISTERS

THORNCOMBE Funeral of Mrs Mabel Fowler – 24th April, 2002.

WINSHAM Marriage of Julie Diane Churchill and Richard James Saxby – 11th May, 2002.



*Faith came singing into my room and other guests took flight.
Grief and anxiety, fear and gloom, sped out into the night.
I wondered that such peace could be, but Faith said, gently,
“Don’t you see – that they can never live with me.”*

UNITED REFORMED CHURCH WINSHAM

Minister – Revd John McMinn – 01935 872105

Hon Secretary – Michael Hebditch – 01460 30201

Sunday services at 10.30am. 1st Sunday, tea and biscuits after the service. 3rd Sunday Holy Communion
3rd Thursday 12.15-1.30 monthly Soup & Cheese Lunch at the Sports Club



THORNCOMBE CHAPEL

Normal Sunday Services: 11am and 6.30pm

Bible Study: Wednesdays – 7.30pm **Ladies Bright Hour:** Alternate Wednesdays – 2.30pm

Saturday Club for Boys & Girls: Two age groups 5-8 years & 11-15 years. 11am to 12 noon every Saturday



ROMAN CATHOLIC CHURCH CHARD

Priest: Cannon James O'Brien – 01460 62197

Services: Sunday Mass 8am and 11am. Weekdays – 9.30am. Holy Days – 9am and 7pm.

Confessions – Saturdays 11am – 12 noon.



JUBILEE FAMILY SERVICE AT ST STEPHEN'S

As part of our village celebrations to make the Queen's Jubilee, we will be holding a special service on Sunday June 2nd at 10.30am.

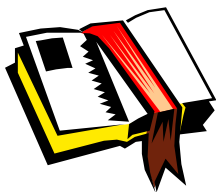


The church will look splendid as we are also having a flower festival. It will be a very special family service suitable for all ages from the very young upwards

- there is no age limit! This service will mark the beginning of our village celebrations on Jubilee weekend. A warm welcome is extended to everyone. There will be a competition for children and adults to make a crown and wear it to church. Prizes will be awarded. **COME AND JOIN US AND GET YOUR FESTIVITIES OFF TO AN EXCELLENT START.**



ANOTHER EXTRACT FROM THE NEW DAYLIGHT BRF NOTES



Jenny Robertson, commenting on the Book of Esther: "We all know what it is like to pray and things get worse. It's like crossing a bog. We wobble on sinking tufts and see no end in sight. We must hold on, take the long view and leap. Teresa of Avila said, 'Faith is one long leap into the arms of God's love.'"

OM



RUSSICUM

An enthusiastic audience at St Mary's, Thorncombe on Saturday April 20th welcomed back Russicum, the St Petersburg Vocal Ensemble. We missed the charismatic angelic-voiced counter tenor who lifted the ensemble to unimagined heights last year. Nevertheless the passion and ancient Christian belief came through in their singing, for example in Stepanov's Antiphon. The glorious bass voice of Kirill Lapshin as the Deacon was answered by the other members where each voice could be distinguished weaving in rich harmony and again in Bulgarian Hristov's 'In thy Kingdom remember us O lord' where the voices were in chanting mode.

Elena Smirnova, the beautifully spoken co-ordinator who introduced each piece, informed us that Christianity was brought to Russia by Byzantine missionaries in the 10th century whose custom it was to chant their worship and rely entirely on the human voice. For this reason no musical instruments are used to this day in the traditional

Orthodox worship in Russia, which also accounts for the extraordinary volume Russian choirs can engender. Russicum, with only five voices, filled our church to the rafters.

I'm sure you all felt a great richness of spirit in the singing of the traditional church music and I, for one, was surprised by the sudden switch to the operatic music of Donicetti and then Franck's 'Panis Angelicus.' Thankfully the Russian flavour was retrieved by the ensemble's last item, the triumphant Easter motet 'The Lord is with us.'



In the first half the singers had relied on sheet music, in the second they sang their folk music from the heart by heart. Dressed as they were in traditional costume we could identify with them in spirit as peasants working in the fields or celebrating a village wedding or racing across the snowy countryside on a three-horse sleigh. I particularly enjoyed their verbal dexterity in 'The new moon shines brightly' and 'The old man's proposal' where they made play with their scarves. The mezzo-soprano's Anna's solo 'My wedding dress' was truly lovely and the pathos of a young girl not wanting to leave home was tear jerking. Clever Russian cross rhythms were shown to great affect in Yergen's tenor solo 'The street traders' but for me Kirill's bass solo 'The mist has covered everything' was the finest, truest singing of the evening.

The three ladies stayed with Pauline and Richard Holt and the three men with Mary Rose and Rob Mangles so thank you for this generous hospitality and particularly to Mary Rose for her brilliant organization.

ER



THORNCOMBE VILLAGE HALL OPEN DAY

The open day held on 13th April was very well attended. Proceedings started at 10am with the opening being performed by our M.P. Oliver Letwin. Twenty exhibits were staged by various clubs and organisations that are active in the village and all of them received considerable interest from the four to five hundred people who attended during the day.

Demonstrations included Wok Cooking by Nora Arnold on behalf of the W.I., the results of which we were able to sample. Julia Snellock demonstrated the intricacies of Egg Decorating and we marvelled at the patience needed and the delicacy of the resulting product. Thorncombe First Responders' Richard Holt gave an interesting talk about their work which is carried out by volunteers and is totally funded from within the parish. The Short Mat Bowls Club played several lengths under rather cramped conditions showing us the skills they have achieved. St.Mary's Guitars gave an enjoyable recital of some of the music that they perform. The village Community Policeman gave us a talk about security in the home and was on hand to give advice.

Coffee, tea and ploughman's lunches were provided by the W.I. during the day.

Everyone who took part must be congratulated on the high standard of the various displays in the hall. The profit on the day of about £270 was donated to the Thorncombe Golden Jubilee Fund.

MS



WINSHAM STREET FAIR – 'Christmas in June'



Christmas is coming rather early in Winsham this year – Saturday, 29th June to be exact. We hope everyone will help to make it a very happy day.

The committee has been working hard to organise as many activities as possible. We have been able to do this through fund raising over the last two years and we would like to thank all those who have supported us in this.

By popular request the Bournemouth Carnival Band will be with us again and are being sponsored by Warner's, to whom we give our thanks. We also have the return of Emazdad the magician and Robert the Robot will try to meet as many children as possible during the day. Behind The Bell there will be a Bungee Run, large inflatable slide and many other activities. There will be a bouncy castle and ball pool for the really young and will be free of charge.

Food will be available during the day from The Bell, the Domino Carnival Club and the P.C.C.

During the evening there will be dancing at The Bell to Ironic and we would like to thank Terri and Tony very much for sponsoring the band. The main draw for the fair will take place during the evening. Lynn Rodway has been working hard to obtain some very nice prizes.

If anyone would like a stall or demonstrate a craft please contact Margaret Slade on 30622 for an application form.

We hope that as many people as possible will dress up for the occasion and perhaps put up a few decorations as 'Christmas comes, but twice this year.'

MS



THORNCOMBE RAIL ACTIVITIES CLUB

At our April meeting we welcomed Humphrey Davies who is a volunteer driver on the West Somerset Railway. He took us through, by means of slides, a day driving a steam locomotive on the West Somerset line from Bishop's Lydeard to Minehead.

To become an engine driver some years must be spent beforehand cleaning locomotives and then learning to fire the engine before at last becoming a qualified driver. He took us through all the work preparing the engine for a day's work. While the fireman is lighting the boiler the driver is filling around one hundred oiling points, which can take up to two hours depending on the type of engine being used. Once the engine is ready for the road its carriages are collected from the sidings and taken to the platform ready for the passengers to board. When permission has been received from the signalman the train leaves on its journey on the longest preserved railway in the United Kingdom. Throughout the journey the driver must be aware of the track conditions, the signals and watch the track ahead. At the end of the day the locomotive has to be put away for the night with the fire disposed of and everything left ready for the crew for the next day.

Humphrey also told us of many incidents which had happened to him while driving and of the different classes of engines that he has driven.

It was a very interesting evening enjoyed by a well-attended audience.

The next meeting will be on Wednesday, 19th June when Chris Challis will lead a further discussion about "Model Railways Alive."

Any enquiries please telephone Michael Sheasby on 01460 30474.



WINSHAM PARISH COUNCIL

The Parish Clerk writes: -

In public question time car parking on Western Way was discussed. The car park at the rear of Western Way is owned by South Somerset Homes but many of the residents in Western Way contribute to the maintenance of the parking area under covenants in their deeds. Some pay a 12th, others a 17th and others a 30th of the total cost of repair, there being no consistency. Some residents eligible to park in the spaces have 1, 2 or 3 cars, others perhaps none. People with no eligibility are using the car park. Cars are parked without road tax. How can this problem be resolved? One idea would be to form a 'Car Park Committee', which could make proposals to place before South Somerset Homes, space allocation for example or parking discs. The parish council is of the opinion that unregistered cars can be reported to the police, as dumped cars, and removed by the local authority.

A letter has been circulated to all users of the Jubilee Hall by the pre school mothers and toddlers group, requesting financial assistance with a garden project at the rear of the hall. Concern was expressed about the impending changes to the garden area. These included to what extent other users had been consulted, and queries as to whether the proposed changes complied with 'Health & Safety' regulations. In the discussion that followed, it was felt that while the parish council was represented on the Jubilee Hall management committee, there was plenty of precedent for the committee to act as it decided. That is not to say that the PC would not feel entitled to intervene if circumstances arose which might, in the parish council's view, have serious down-side implications for the village.

It was felt that this was probably not such a situation. However, the parish council decided that it would look into the proposals prior to their start. (Following on from this, after investigation, it was felt that the changes proposed were reasonable, if contentious, and did not justify intervention.)

Mr Keith Marsh along with Mr Paul Love was called out to recover a manhole cover thrown down the manhole on the lower recreation ground. The problem has been reported to South West Water with a specific request to secure the cover.

An anonymous letter was received. It was decided not to respond and the letter was not read out.

A letter was received from the Citizen's Advice Bureau, written on behalf of a resident of Western Way. Children are playing football in the play area; the Parish Council has a notice in the play area 'No Ball Games'. How can this be enforced? The parish council is limited in their powers. The chairman said: 'Our responsibility only goes as far as signing the area. We have no powers of enforcement'. One suggestion was to make the surface unattractive for football, but perhaps it would then be just right for mountain bikes. The parish council has a responsibility to see that children of all ages have a safe area to play. If the facility is abused then everyone loses. The lower recreation ground and play area is predominantly designed for younger children. Football facilities are available on the upper recreation ground.

The next meeting of the Parish Council will be on **Wednesday 5th June at 8 p.m.** in the Jubilee Hall. If you can, please come along.



LONDON MARATHON 2002 – JOE RUSSELL

I would like to take this opportunity to thank everyone for your wonderful sponsorship monies paid and promised to me in the above event. At the time of writing the total amount stands in the region of £450, greatly exceeding my expectations when I first thought of running on behalf of Cancer Research UK.

The weather conditions for the event were superb. The first five miles were great, with each succeeding mile taking less time than the last and a vision of a really good time opened up before me. Unfortunately this was not the only thing that opened up! I had just passed the 5-mile mark when the runners in front of me suddenly parted and I found myself staring at a sodden metal advertising sign flat on the road before me. As soon as my foot came down on it I did a triple salko and landed on the ground eating tarmac and gravel. Stunned and with blood coming from my hands and knees and with an aching chest, I made my way to a St John's post, in the absence of a First Responders vehicle, where I received treatment for the injuries. This enabled me to continue to the end of the race. I think my finishing time was in the region of 4 hours and 27 minutes. I shall have the official time later.

I know that it was the thought of letting all you good people down and the loss of the money to the charity that kept me going, so once again, my grateful thanks for your superb help on both counts.



CAKES, CAKES AND MORE CAKES!

I have been asked to run a cake stall in aid of Somerset St Margaret's Hospice on Saturday and Sunday 6th and 7th July, the days that the Gardens of Winsham are open to the public.

I am asking personally as many people as possible to bake a cake or cakes, so that we can help raise as much money as possible for this very worthwhile cause. If I don't manage to see you to ask, please take this notice as an invitation to help!

The cakes can either be delivered to me at 31 Church Street, Winsham on the morning of Saturday July 6th, or to the Jubilee Hall in early afternoon of the same date.

Many, many thanks.

Phyll Howell



THORNCOMBE SWIMMING POOL

Let the summer begin! The swimming pool is now open so come and join to be part of the fun.

For the whole season it will cost £20 plus £5 deposit - what a bargain! Forms available from Thorncombe Stores or 7 Gribb View.

Swimming Pool Cttee



This month started on a very sad note, 'a sign of the times' I hear myself saying, as my grandmother noted so often. The church at Cricket St Thomas was burgled. Between a Sunday service and a Monday morning some individuals walked in and stole an ensign commemorating the Queen's Coronation and a beautiful travelling crucifix. Although the church will remain unlocked, a number of special or valuable items have had to be put away for safekeeping.

On a happier note the wild life park is bursting with babies. Walking through lemur wood you could stand transfixed for hours watching the antics of all the ringtails as they cling and swing with their proud mothers. For the first time since arriving many years ago, the emus have decided to become responsible parents and have managed to rear some incredibly sweet and fluffy chicks that should replenish their dwindling numbers, foxes permitting! The baby lambs are, of course, in abundance everywhere.

Tickets for both summer open-air concerts are selling fast so if you wish to see Richard 111 or listen to the Bournemouth Philharmonic Orchestra buy your tickets now.

The hotel has also been very busy, with hot air ballooning nights, rock'n'roll weekends and a spectacular visit from the 'Stars of the Moscow Circus.' You could never say life was dull on a Warner break. *SV*



BOOKS, BOOKS, BOOKS



There is now a bookcase in the back of the church at St Mary's, Thorncombe, by the font, with books for borrowing. If you have a book which you have found helpful in your Christian life and would like to lend it, we'd be grateful. Budding writers might like to recommend books they have enjoyed in the parish magazine. *MRM*



THORNCOMBE PARISH COUNCIL

The Parish Clerk Writes -

April was an extremely busy month for the parish council. The monthly ordinary parish meeting was held on April 2nd; the annual parish meeting on 13th April and an extraordinary meeting held on 23rd April to discuss the new code of conduct.

The annual general meeting of the parish council was held on 7th May. The election of chair, vice-chair and appointments of councillor's responsibilities took place followed by a very full and agenda.

The annual parish meeting was very well attended and most informative. The large number of local clubs, groups and associations in the Parish presented reports. Refreshments courtesy of Cllr Pauline Holt followed this. The speaker for the evening was P.C. Richard Winward from Lyme Regis. The Constable gave a lively talk and was later joined by our local M.P. Oliver Letwin, Shadow Secretary of State. Both gentlemen were able to answer and field questions on the subject of rural policing.

The extraordinary meeting to discuss the new code of conduct was attended by Mr Alan Muir, monitoring officer for West Dorset District Council and Mr Richard Hanton, their corporate services manager. They explained the new register of interest, the declarations of acceptance and interest and the protocol for adopting the code.

The parish council decided to take no action on the code of conduct

At the meeting on 7th May, the chairman, Cllr Mark Agnew and vice-chair, Cllr Terry Bennett were re-elected. A list of councillors and committees is posted on the notice boards in Thorncombe and Holditch.

The meeting arranged by MP Oliver Letwin's office with the police, district councillor Ian Gillespie and the Thorncombe Parish Council to discuss the parish's concern over rural policing was held at Bridport Police Station. Supt. Palmer did not attend. Once again, it was stressed that all vandalism and crime should be reported as policing needs are determined by statistics. The more the reports received, the higher the police presence. So please contact the police directly on the following numbers: **Genuine Emergency requiring Urgent Police Response – 999; Non-Urgent 01297-442603; Minicom users-for the hard of hearing or speech-impaired 01202/01305 223954.** If you do not wish to make direct contact yourself, please call Cllr Janet Walker on 30212 for assistance.

Neighbour Watch – The police cautioned that it was important to get at least two quotes for work to be done around your home and to be wary of workman coming to your door offering their services. There had been concerns over someone going door to door offering gardening services. If in doubt, contact the police.

Two planning applications were discussed at the meeting, one for relocation of the vehicular access and parking area at Shedrick Cottage, Forde Abbey which was approved by the parish council; and the second, the planning committee's site visit and reply on the building of a storage building at the Granary, Easthay Lane. The parish council objected to this application based on its size, location and contravention to Dorset planning policy.

The West Dorset District Council approved the planning application to extend the village cemetery.

The Emergency Officer, Mr Brian Walley, requested that the Parish Council continue to pursue the problem of flooding and inadequate drains on Chard Street. This had been brought to the Dorset County Council and West Dorset District Council's attention in the previous year and would be followed up.

West Dorset is compiling a book of residents' names (from the oldest to the youngest), to be sent to the Queen congratulating her on her Golden Jubilee. A folder containing the sheets for signature is being kept at the Thorncombe Village Store. If you would like to sign for yourself or your children, please do so.

Mr Snellock handed out draft copies of the events and activities to take place on Monday 3rd June at the sports club for the Golden Jubilee celebrations. This will be a fun packed day catering for all ages.

Any Parishioner wishing to have an item placed on the agenda should contact the chairman, Mark Agnew (30385) or myself (30139) by Sunday 2nd June 2002. The next meeting is Tuesday, 11th June in the Village Hall.



FRIENDS OF SOMERSET AND DORSET CHURCHES AND CHAPELS

A fun way to raise money for the churches, with 50% going to our own church, will be a sponsored bike ride or walk to take place on Saturday, 14th September from 10am – 6pm. Sponsor forms available from Mary Rose Mangles – 01460 220235.



Thank you to everyone that supported us at the fashion show in April. We made a profit of £178.71. Thank you to Winsham Stores who assisted with the sale of tickets and to the committee members.

The theme for June/July has not yet been arranged. We will of course be doing something for the Queen's Golden Jubilee and we are even doing something about Christmas due to the Street Fair's theme.

As I am sure some of you will be aware, the pre-school have re-vamped the garden at the Jubilee Hall. The children enjoyed watching its progress and we hope they have some

nice weather to be able to get the most out of it.

We are pleased that we have found ourselves a relief assistant. Vicki Long has kindly offered her services. It has also been nice to have Jan coming in on a Tuesday to play the piano, all the children really enjoy this. Thank you Jan.

AE



DORSET ART WEEKS 25TH MAY – 9TH JUNE

Next door in Dorset many artists and craftspeople are busily preparing for celebration of the visual arts. The idea is to encourage people to visit and support this important part of the rural economy. Nearly five hundred artists are involved at over three hundred venues, and the last Dorset Art Week attracted over 40,000 visitors.

Very close to us in Winsham is Eva Higgs and Jane Hazlewood at 4 The Terrace, High Street, Thorncombe. Eve is a graphic artist working in mixed media. Jane is exhibiting sculpture and drawings.

In Drimpton, at Brookfield, Chard Road, you can find the Studios of Jenny Angold and Pip Benveniste. In nearby Greenham, at Old Crown Cottage are the Studios of Guy Martin, Furniture Designer and Anne Quick, Painter. Anne, some will remember, very recently gave her time to judge the pictures exhibited at the Winsham Art Club Annual Exhibition.

Visit the Dorset Art Week's Web site for more information www.dorsetartweek.com



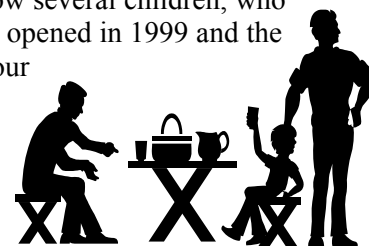
ST STEPHEN'S MISSIONARY GROUP

This group was started in the 1960's to raise money for Missions home and abroad. Over the years a lot of money has been raised, especially for projects abroad.

We are an inter-denominational group and our efforts go into charities mainly run from this country where we know the money is going to help the people directly as well as helping people in our own country. The charities we support are: Sight Savers International who perform eye operations abroad; The Home Farm Trust for Mentally Handicapped children in this country and The Missions to Seafarers with whom we have close links, as we have supported them for very many years.

Our new charity is Romanian Children's Homes. This is a charity run by Ian and Joan Sherwood from Ilton who have set up two homes. They bought two derelict houses and renovate them and now several children, who were homeless, are being looked after by a pastor and his wife. The first home was opened in 1999 and the second in 2001. The Missionary Group has decided to sponsor a family for four children; they are the Taranu family, Ioan, Marius, Catalin and Alexandra.

This is a Christian based charity that we felt we could help so please support us in our future fund raising projects. There are other children needing to be sponsored so if you would like to help please ring Ian or Joan on 01460 54952. They are going out to Romanian on the 1st June to oversee the work that is taking place out there and are looking to the future by possibly buying a house and some land so that the children have somewhere to work and live after leaving the homes.



ML



THORNCOMBE ST MARY'S PRIMARY SCHOOL

We have had an encouraging response to our Cyber Café and more people are coming along every week. We have an expert on hand to help both beginners and the more experienced. We are asking for a contribution of £1 per session towards running costs, which is very inexpensive by commercial standards. This entitles participants to spend up to two hours on the "net" or to seek advice from our experts. Please do come along on Wednesday evenings after school from 4 – 6pm in term time.



We now have three digital cameras in school, which we are using for a number of tasks across the curriculum. A

digital microscope has also enhanced our science lessons. Children are able to take a “snapshot” of all sorts of items and to store the pictures in the computer.

The gravel in our Quiet Garden has not bedded down as well as we had hoped so we need to remove some of it. If there are any parents or friends who can spare an hour or two to fill strong plastic sacks or who can supply us with some additional strong plastic sacks, we would be grateful.

Thank you to all the people who sent us cereal box tops. We have received £53 towards buying some computer equipment. We need to update some equipment to use on our PC machines so this “windfall” will be just what we need. If there are any vouchers still left in pockets or purses we would be delighted receive them.

This week Sarah Baigent took Stephie Perry to choose the seat, which is in memory of Daisy. She chose a gazebo and bench, which will have climbing plants planted nearby to trail over the gazebo. We have asked Stephie to consider what she would like to be inscribed on the plaque and Dana Barker’s daddy has kindly offered to obtain this for us.

We seem to be acquiring a number of golf balls in the grounds. The school gates are locked at the end of the day and we do not allow people to use the grounds for golf practice.

A reminder that the PFA Summer Boot Fair will be held on Saturday 22nd June from 11.00 – 2.00pm so please book your places early.



NEW LOOK GARDEN FOR THE JUBILEE HALL

Sponsored and paid for by the Pre-school and Toddlers with the help of a small grant the ground has been levelled, re-turfed and surrounded by a wooden picket fence with a gate.

It was necessary to establish new levels, so a low retaining wall has been built adjacent to the path around the hall, with a shallow flight of steps that lead to the new level. The access to the oil tank has also had a picket fence with a gate placed around it to facilitate oil deliveries.

We thought these changes would benefit everyone who uses the hall and who would like to use the garden for a breath of fresh air. Primarily, of course, we did it for the benefit of the little ones who now have a safe and level space in which to play when the weather is fine and the grass is not wet.

As a result our group has incurred a £400 debt, after the grant, hence our recent appeal for money to help reduce this.

AE &JR – Pre-School & Toddlers



With the theme for the Street Fair being Christmas the Bell will be serving Christmas Dinner on Sunday, 30th June. Because of limited spaces bookings are essential.

Don’t forget we have entertainment on 1st June 8pm till late, as part of the Golden Jubilee celebrations, everyone welcome.

The beer garden is well underway. We hope everyone makes good use of it, weather permitting of course.



THORNCOMBE VILLAGE TRUST

Thirty-seven members attended the A.G.M. and heard John Dalziel, the Chairman, report on activities over the past. The meetings had been well attended and both the annual plant sale and Christmas sale with Dorset Wildlife Trust had been successful social events. The Trust had supported the Parish and District Council at the Quinn Inquiry. Twenty-eight trees had been planted in the parish. The remainder of the Derek Comley Memorial Fund will be spent on a seat to be placed in Johnson’s Wood adjacent to the

Dungeon. The stile at the top is to be replaced by Dorset County Council. A sum of money will be contributed to a public address system to be installed in the Village Hall and Community Room.

The Chairman felt the Trust was in good heart. Rachael Whitbread had produced a very interesting News Sheet, which will be a twice-yearly publication. She would be grateful for any suitable contributions.

The Treasurer, Linda Timms, reported that the Trust was in a healthy financial state and thanked Terry Freeman for auditing the accounts.

The meeting then enjoyed a talk with slides and commentary by David Chubb, F.R.P.S. The first element was a tour of Dorset villages with background music. We were then taken on a tour of beautiful gardens in Somerset and Devon. Finally, the rather sad tale of a mouse and his journey to the 'hole in the sky' having been caught by a beautiful barn owl.

The meeting on 1th July will be a talk on 'Auctions' by Charles Lanning of Bonham's of Honiton in the Village Hall at 7.30pm.

The annual subscription to join the Trust is £2.50, families £4.00.

Did you see.....?

A recent visit to the English Nature Reserve at Hardington Moor (near East Coker) underlined two of the features of the current spring. A profusion of wild flowers and a scarcity of summer-visitor birds. The fields at Hardington were carpeted with a superb array of orchids, mostly green-winged, and cowslips. To be able to view literally thousands of both in traditional pasture is indeed a privilege; few such sites have survived the changes in farming practice since the war and special arrangements have had to be made for the correct management of this reserve. As for birds, the hour spent viewing the flowers produced neither sound nor sight of a single visitor bird. It seems that the main "waves" of such as martins and warblers and also the cuckoo, may have been delayed in their passage northwards by a large area of persistently bad weather over southern Europe.

Meanwhile, locally, early broods of garden birds seem to have done unusually well and even our garden song thrush has been a successful parent. Mistlethrushes however, remain scarce though there are signs of a recovery in their numbers.

Our local swallows returned on 14th April, house martins on 1st May and the first swift appeared on 6th May.



STREET WISE



At least two large estates have recently given up their dairy enterprises because of the dramatic collapse in the milk price since Christmas. During the foot and mouth epidemic Mrs Leaney, from Corfe, near Taunton, wrote a diary in the Daily Telegraph, which gave its readers the opportunity to understand the implications of the crisis on an ordinary family farm. To-day's edition of the paper, which tells of the heart-breaking decision to sell their herd because of the milk and calf prices, came as a shock to me, because there seemed hope as

she wrote the last page of her diary. The Leaney's farm is on land that allows cows out to grass much earlier than most of us, with the resulting saving in feed costs, which in turn increases the margin on their milk sales. It would seem that cow units of 90 might soon be a thing of the past. The only good thing to come out of all this is that her writings were so successful she will be using that skill, in future, to help her family income.

Mary drinks semi-skimmed milk, which I reluctantly pay for from time to time. Last week, after visiting the dentist, I bought 4 pints of milk in the Co-Op and put a pound coin on the counter only to be told they needed another two pence. We will be lucky to get 35 pence for the same amount this month. To make it even worse, today's colour magazine had a double page spread in glorious blue from Waitrose, with some green, representing grass presumably, and a Friesian cow with the words, "Select Farm Milk, 28p/pint, (equalling £1.12 per carton.) On the left hand page, written in the grass, "Waitrose" is the only supermarket, which knows every British farm, and farmer who supplies every pint of its fresh milk. Find out more at www.etc." Now our milk is Farm Assured, each tank tested when the milk is picked up, every farm location known on each load of milk and regularly going to a fresh milk bottling plant. Waitrose buy their milk from bottling plants!

As you all know, the primary producer of anything always gets a much lower cut of the cake, be it clothes, manufactured goods, food, you name it. Our milk co-operative is very active, looking at various ways of increasing our share of the end product price by manufacturing milk products as well as selling milk in the liquid market.

This will be the only way to increase a fairer share for us at the beginning of the chain and hopefully for you at the other end.

Another lovely abbreviation, TROBI. The clue is; they have discovered Britain's tallest tree, a Douglas fir measuring 62 metres. It is in a stand of super-tall trees in Scotland. The answer, in case it keeps you awake at night is, 'The Tree Register of the British Isles.'

MH



THORNCOMBE JUMPING BEANS TODDLER AND PLAYGROUP

April was a very busy month. Immediately after the Easter break we were faced with the news that OFSTED were about to pay us a visit. Normally we are given two weeks' notice to get our paperwork in order but because of the holiday our notification was delayed and we had no notice. No stay of execution was allowed so a lot of late nights were spent dotting i's and crossing the t's. As requested by them, dates were entered on the form giving dates we were not available for inspection. Guess what, the very day we had arranged to take the children to the recreation ground for some swinging, climbing and scrambling practice OFSTED came knocking on the door. The very pleasant inspector was suitably dismayed at the inefficiencies of her office, and once she was informed of the problem she offered to come back another day. However, we put off the visit to the playground and invited her in, with the result "Well done Thorncombe Playgroup" and "Could do better OFSTED." We now await our official inspection report and hope to be able to quote some good comments in the next magazine.

Our next visitor arrived the very next day. This was our Early Years Advisory Teacher who visits us regularly throughout the year to discuss our training needs and to help us to further improve our educational provision. This she judged as being of a high quality.

Our 50/50 sale proved to be a little disappointing. There were plenty of items for sale but not many people came through the door. We are very lucky to have plenty of support from the village as a general rule and the children are seeing the benefit with lots of new and exciting things to play with.

Our next fund raising event is a summer fun day in June in the village hall where our hard working fundraisers plan to have something to suit the whole family. Do come along and join in the fun. We will also be inviting everyone to the ever popular, and what is seemingly becoming, the annual Cream Tea at Janet Walker's home. This will be held in July and we hope Forde Abbey will still have strawberries available for the occasion. The dates and times will be posted at various points in the village nearer the time.

For details of vacancies and any other information please contact Lindsay on 01460 30389.



WINSHAM RECREATION GROUND

The Annual General Meeting of the Management Committee will be held shortly, as will that of the Sports & Social Club, but unfortunately we have not been able to fix the dates yet.

As mentioned before in this column, there are only a few people carrying the load of running the Recreation Ground and the Sports & Social Club and other pressures and commitments can make things difficult for them. We will need more people to help with the development of the planned improvements and look forward to seeing lots of you at the A.G.M.s – please keep an eye open for posters giving the details.

RMS



WINSHAM JUBILEE FUN DAY

Monday 3rd June from 2.30pm at the Recreation Ground come and join in the fun. Play rounders, soft cricket, penalty shootouts, skittles, welly throwing, target bowls and much more. There will be a tug of war (teams of 6) starting at 5pm and a fun run. A competition for the best Garden Party Hat – male and female and boys and girls, prizes will be awarded.

Bring a picnic, tea and coffee will be available at 10p per cup. The bar will be open from 4pm.

If you need transport because of infirmity please 'phone 30457 on the morning.

ML

WINSHAM W.I.



At our meeting on 9th May our business was to discuss this year's resolutions which were firstly, to urge the government to support existing small abattoirs and, secondly, to ask the N.F.W.I. to put pressure on the government to implement stricter controls on the importation of foodstuffs into the country for both humans and animals. Both resolutions were agreed. As you can see the W.I. does discuss and voice their opinions on some very important issues!

On 13th June we are going to Thorncombe to join them for supper. We shall meet at the Jubilee Hall at 6.45pm. The competition is for a corsage for eveningwear.

September 7th is the county outing to The Lost Gardens of Helligan.

Mrs Rose reported on the council meeting. Items discussed were lymph oedema, a disease that does not respond to treatment and grants available to village halls for ramps, wheel chairs etc. for the disabled. *EJ*



ST STEPHEN'S, WINSHAM – FLOWER FESTIVAL

If anyone has cream or white flowers and any foliage they can spare for the Flower Festival we should be pleased to accept it. It can be brought to the church on Friday, 31st May by 2pm if possible. Thank you.



VOLUNTEERS WANTED

We are hoping to have another Saturday morning working on tidying up round the gravestones and paths in the Churchyard at St Mary's, Thorncombe. All welcome on Saturday June 8th, 10am to 12.30pm. Refreshments will be provided! Please come and join in, with your edging shears, gardening gloves, secateurs, and edge trimmers.



PLANNING FOR THE FUTURE – A NEW TREASURER

At St Mary's AGM, Keith Fursman was re-elected treasurer to the PCC. He has served in this post for some years now, and as many readers will realise, he is no longer a resident in Thorncombe. He has indicated that he will resign from the treasurer's post next April. The ideal situation would be if someone worked alongside Keith for a month or so, to ensure a smooth handover.

If you think you could help the Church by keeping the books please contact Keith (Beaminster (01308 861346)) or one of the churchwardens. *HR*



WINSHAM OPEN GARDENS, 2002



By the time this magazine hits the streets, it will be only a little over a month till the Winsham Open Gardens Weekend and plans are now well advanced. The event was last held two years ago, over one day, when over £1500 was raised for St. Margaret's Somerset Hospice. This year, over two days, we hope to substantially beat that figure, with the proceeds going to the building fund for the new hospice in Yeovil, where work is already under way.

We currently have eighteen gardens, which will be open, ten of them new to the open day. We are very grateful to their owners for agreeing to participate, and also to the numerous people who have volunteered to help. We can still consider a few more gardens to be open, if anyone else would like to join in – please phone 30305.

Fund raising extras this year will be a book stall (all new books at half price), cakes and preserves, and a raffle. Cakes of all shapes, sizes and colour will be needed to keep the stocks up for two days! Please contact Phyllida Howell on 30379 if you can provide one (or three...) For the preserves, we need jam jars – respectable standard 1lb. or 12oz. jars. Please contact Janet Smart on 30305, who will call and collect them, or leave them with Joan Aslett at Manor Farm Cottage.

More helpers are always welcome, and we would particularly like to hear from anyone who could distribute leaflets and posters to spread the word outside the village. (They are available now).

Opening times will be 2-6pm on Saturday 6th July and 10am-5pm on Sunday 7th July. Admission to all the gardens will cost £3.00 to cover both days (children free). The price includes a map and guide to the gardens, some of which will not be open for the whole time. The contacts for any enquiries are Roy or Janet Smart on 30305.



WINSHAM WALKERS

Following the successful series of walks in Millennium year and the latest one on Easter Monday, interest has been expressed in holding walks more frequently. It has been suggested that walks should be held during the week on a monthly basis. It is envisaged that the walks would be within the district with the occasional one further afield.

For the initial walk, of approximately 2 hours, it is suggested that interested walkers should meet outside The Bell at 11.00 a.m. on Thursday, 6th June.

If you cannot make this date but are interested in future walks contact Peter Pye, 01460 30751.



NOVI MOST – NITE’N’DAY

Saturday 22nd June is the day St Mary’s will be praying over 24 hours for Bosnia, one of the most devastated countries in the world. There will be a rota in the back of the church with 48 half-hour slots. We will be praying at home and hope there will be enough “owls” to cover the night slots. There will be information to help you pray. Remember, prayer changes things!

MRM



SCHOOL HOLIDAYS LONG AGO

Our holidays, of course you know,
Were always spent at Home.
We had no money in those days
To go abroad and roam.

The families were bigger then,
The children all were friends.
We played our games together
From dawn till daylight ends.

We took our water, bread and jam
To have our picnic tea.
The roads and fields were safer then,
And we could play quite free.

We picked the fruit that grew around
In hedgerows, copse and field.
We children always knew the place
That gave the biggest yield.

Our mothers made us jams and tarts,
The diets then were healthy.
We had a very happy life
Although we were not wealthy.

The highlight of our holiday
Was a half-day trip to Lyme.
It was the treat from Sunday School,
We did enjoy that time.

The children singing, shouting,
Were running filled with glee.
As down the hill they gaily went,
From station to the sea.

The walk from sea to station
Was a very different thing.
No skipping, dancing or playing,
And nobody wanted to sing.

Of all the days of summer
This one was surely best.
Our fathers’ met us off the train
And we felt truly blessed.

MD Vowden

SUMMER CONCERT AT ST STEPHEN'S CHURCH, WINSHAM

SATURDAY, 8TH JUNE, 2002 AT 7.30P.M.

Tickets £3.50. Under 16's and Senior Citizens £2.00
Available at the door from 7 p.m.

All Proceeds to Church Funds

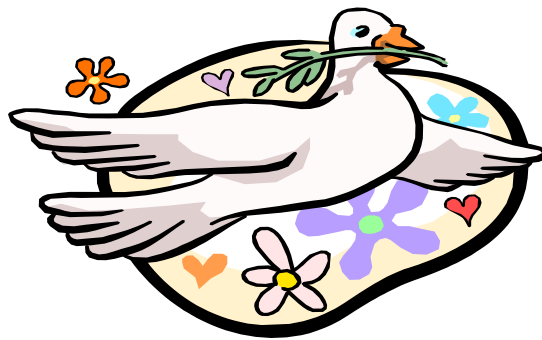
Once again I have been asked to organise a concert.

This year South Somerset Junior Choir will be performing alongside Alison Appleyard (mezzo-soprano,) Philip Salter (piano,) Rachel Weller (flute) and a wealth of other local talent.

If you enjoyed the last concert, this one promises to be even better, with music and entertainment to suit all tastes.

Last year was a sell out, some come along early!

Steve Weller



SCHOOL HOLIDAYS LONG AGO

Our holidays, of course you know,
Were always spent at Home.
We had no money in those days
To go abroad and roam.

The families were bigger then,
The children all were friends.
We played our games together
From dawn till daylight ends.

We took our water, bread and jam
To have our picnic tea.
The roads and fields were safer than,
And we could play quite free.

We picked the fruit that grew around
In hedgerows, copse and field.
We children always knew the place
That gave the biggest yield.

Our mothers made us jams and tarts,
The diets then were healthy.
We had a very happy life
Although we were not wealthy.

The highlight of our holiday
Was a half-day trip to Lyme.
It was the treat from Sunday School
We did enjoy that time.

The children singing, shouting
Were running filled with glee.
As down the hill they gaily went,
From Station to the sea.

The walk from sea to station
Was a very different thing.
No skipping, dancing or playing
And nobody wanted to sing.

Of all the days of summer
This one was surely the best.
Our fathers' met us off the train
And we felt well and truly blessed.

M D Vowden

A CHILD'S PRAYER

Jesus loves his little children,
He loves them more each day.
And though He has His thousands
He listens to each one pray.

He is sad when we are naughty.
He smiles when we are good.
But He knows how very hard it is
To do the things we should.

Our world is very beautiful
And we must keep it sweet.
We'll pick up rubbish that we drop
And smile at those we meet.

M D Vowden

